

# ACTG2 Antibody



PACO33260

---

## Product Information

**Size:**

50ug

**Reactivity:**

Human

**Source:**

Rabbit

**Isotype:**

IgG

**Applications:**

ELISA, WB, IHC

**Recommended dilutions:**

ELISA:1:2000-1:10000, WB:1:1000-1:5000,  
IHC:1:20-1:200

**Protein Background:**

Actins are highly conserved proteins that are involved in various types of cell motility and are ubiquitously expressed in all eukaryotic cells.

**Gene ID:**

ACTG2

**Uniprot**

P63267

**Synonyms:**

Actin, gamma-enteric smooth muscle (Alpha-actin-3) (Gamma-2-actin) (Smooth muscle gamma-actin) [Cleaved into: Actin, gamma-enteric smooth muscle, intermediate form], ACTG2, ACTA3 ACTL3 ACTSG

**Immunogen:**

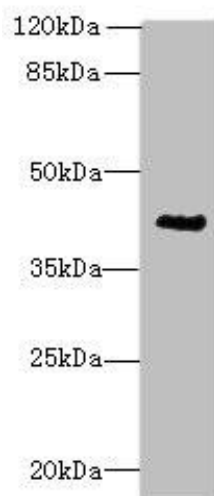
Recombinant Human Actin, gamma-enteric smooth muscle protein (181-376AA).

**Storage:**

Preservative: 0.03% Proclin 300. Constituents: 50% Glycerol, 0.01M PBS, PH 7.4

## Product Images

---



### Western blot

All lanes: ACTG2 antibody at 3 $\mu$ g/ml + CEM whole cell lysate

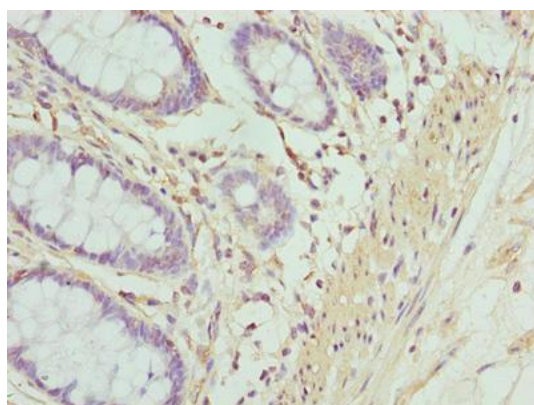
Secondary

Goat polyclonal to rabbit IgG at 1/10000 dilution

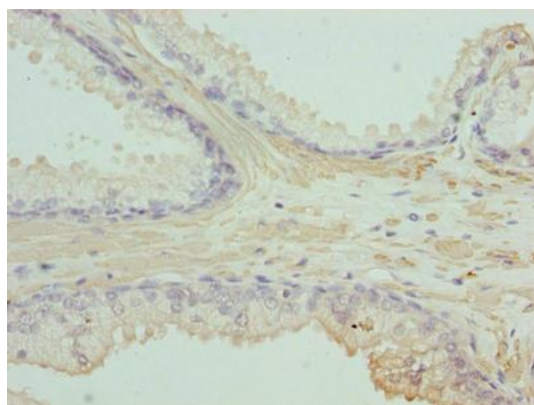
Predicted band size: 42, 38 kDa

Observed band size: 42 kDa

.



Immunohistochemistry of paraffin-embedded human colon tissue using PACO33260 at dilution of 1:100.



Immunohistochemistry of paraffin-embedded human prostate cancer using PACO33260 at dilution of 1:100.