

PACO33384

Product Information

Size:

50ug

Reactivity:

Human

Source:

Rabbit

Isotype:

IgG

Applications:

ELISA, WB, IHC

Recommended dilutions:

ELISA:1:2000-1:10000, WB:1:500-1:5000,
IHC:1:20-1:200

Protein Background:

Involved in complement regulation. The dimerized forms have avidity for tissue-bound complement fragments and efficiently compete with the physiological complement inhibitor CFH. Can associate with lipoproteins and may play a role in lipid metabolism.

Gene ID:

CFHR2

Uniprot

P36980

Synonyms:

Complement factor H-related protein 2 (FHR-2) (DDESK59) (H factor-like 3) (H factor-like protein 2), CFHR2, CFHL2 FHR2 HFL3

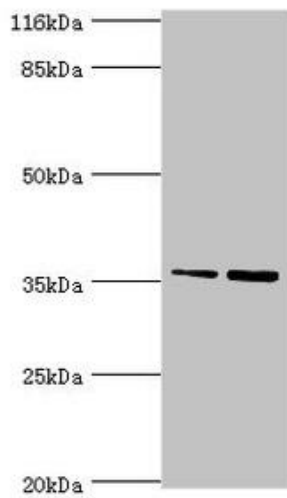
Immunogen:

Recombinant Human Complement factor H-related protein 2 protein (20-269AA).

Storage:

Preservative: 0.03% Proclin 300. Constituents: 50% Glycerol, 0.01M PBS, PH 7.4

Product Images



Western blot

All lanes: CFHR2 antibody at 2 μ g/ml

Lane 1: Hela whole cell lysate

Lane 2: 293T whole cell lysate

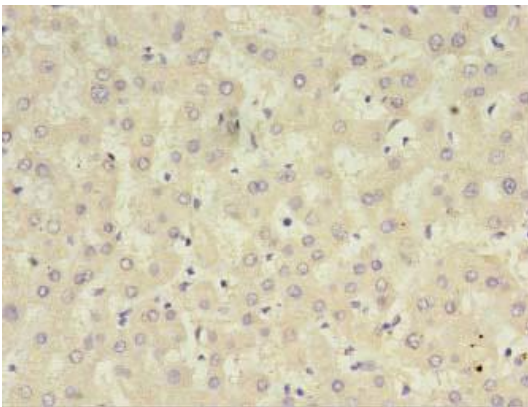
Secondary

Goat polyclonal to rabbit IgG at 1/10000 dilution

Predicted band size: 31, 28 kDa

Observed band size: 36 kDa

.



Immunohistochemistry of paraffin-embedded human liver tissue using PACO33384 at dilution of 1:100.