

PACO33456

Product Information

Size:

50ug

Reactivity:

Human

Source:

Rabbit

Isotype:

IgG

Applications:

ELISA, WB, IHC, IF

Recommended dilutions:

ELISA:1:2000-1:10000, WB:1:500-1:2000,
IHC:1:20-1:200, IF:1:50-1:200

Protein Background:

Recognizes as substrates free retinal and cellular retinol-binding protein-bound retinal. Does metabolize octanal and decanal but does not metabolize citral, benzaldehyde, acetaldehyde and propanal efficiently.

Gene ID:

SEPSECS

Uniprot

Q9HD40

Synonyms:

O-phosphoserine-tRNA(Sec) selenium transferase (EC 2.9.1.2) (Liver-pancreas antigen) (LP) (SLA-p35) (SLA/LP autoantigen) (Selenocysteine synthase) (Sec synthase) (Selenocysteinyl-tRNA(Sec) synthase) (Sep-tRNA: Sec-tRNA synthase) (SepSecS) (Soluble liver antigen) (SLA) (UGA suppressor tRNA-associated protein) (tRNA(Ser/Sec)-associated antigenic protein), SEPSECS, TRNP48

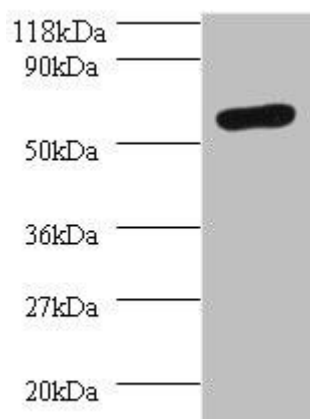
Immunogen:

Recombinant Human O-phosphoserine-tRNA(Sec) selenium transferase protein (5-451AA).

Storage:

Preservative: 0.03% Proclin 300. Constituents: 50% Glycerol, 0.01M PBS, PH 7.4

Product Images



Western blot

All lanes: SEPSECS antibody at 2 μ g/ml + 293T whole cell lysate

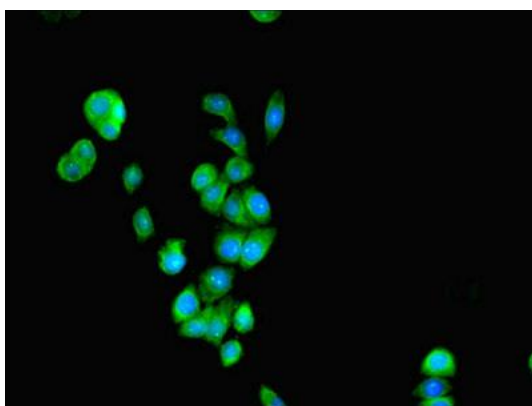
Secondary

Goat polyclonal to rabbit IgG at 1/10000 dilution

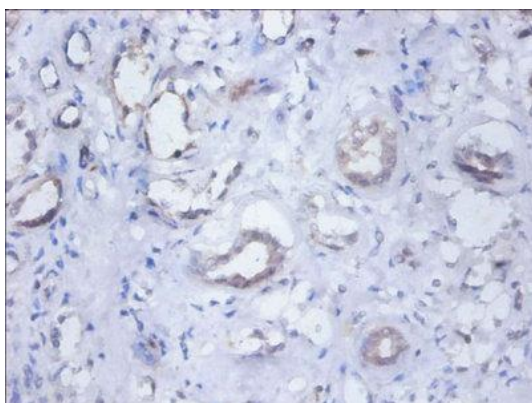
Predicted band size: 56, 6 kDa

Observed band size: 56 kDa

.



Immunofluorescent analysis of PC-3 cells using PACO33456 at dilution of 1:100 and Alexa Fluor 488-conjugated AffiniPure Goat Anti-Rabbit IgG(H+L).



Immunohistochemistry of paraffin-embedded human kidney tissue using PACO33456 at dilution of 1:100.