

PACO33484

Product Information

Size:

50ug

Reactivity:

Human

Source:

Rabbit

Isotype:

IgG

Applications:

ELISA, IHC

Recommended dilutions:

ELISA:1:2000-1:10000, IHC:1:20-1:200

Protein Background:

Ceruloplasmin is a blue, copper-binding (6-7 atoms per molecule) glycoprotein. It has ferroxidase activity oxidizing Fe²⁺ to Fe³⁺ without releasing radical oxygen species. It is involved in iron transport across the cell membrane. Provides Cu²⁺ ions for the ascorbate-mediated deaminase degradation of the heparan sulfate chains of GPC1. May also play a role in fetal lung development or pulmonary antioxidant defense.

Gene ID:

CP

Uniprot

P00450

Synonyms:

Ceruloplasmin (EC 1.16.3.1) (Ferroxidase), CP

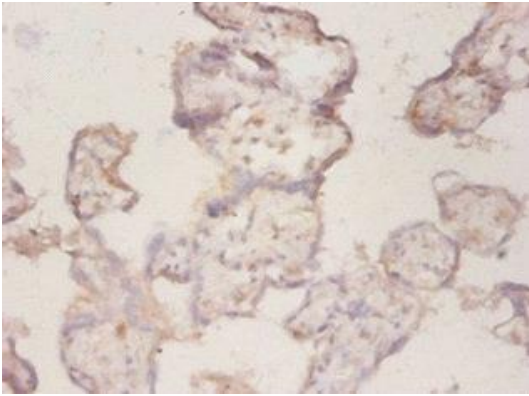
Immunogen:

Recombinant Human Ceruloplasmin protein (807-1050AA).

Storage:

Preservative: 0.03% Proclin 300. Constituents: 50% Glycerol, 0.01M PBS, PH 7.4

Product Images



Immunohistochemistry of paraffin-embedded human placenta tissue using PACO33484 at dilution of 1:50.