

PACO33508

Product Information

Size:

50ug

Reactivity:

Human

Source:

Rabbit

Isotype:

IgG

Applications:

ELISA, IHC

Recommended dilutions:

ELISA:1:2000-1:10000, IHC:1:20-1:200

Protein Background:

Appears to have a role in the catabolic pathway of the renin-angiotensin system. Probably plays a role in regulating growth and differentiation of early B-lineage cells.

Gene ID:

ENPEP

Uniprot

Q07075

Synonyms:

Glutamyl aminopeptidase (EAP) (EC 3.4.11.7) (Aminopeptidase A) (AP-A) (Differentiation antigen gp160) (CD antigen CD249), ENPEP

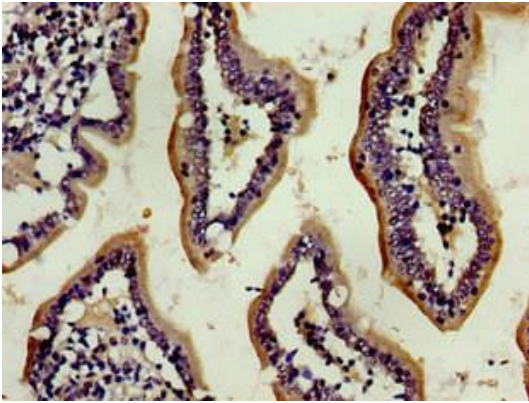
Immunogen:

Recombinant Human Glutamyl aminopeptidase protein (719-949AA).

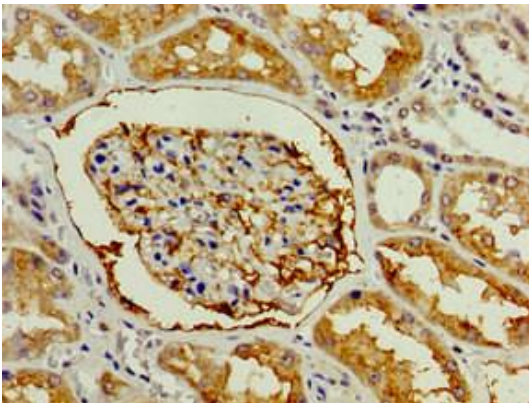
Storage:

Preservative: 0.03% Proclin 300. Constituents: 50% Glycerol, 0.01M PBS, PH 7.4

Product Images



Immunohistochemistry of paraffin-embedded human small intestine tissue using PACO33508 at dilution of 1:100.



Immunohistochemistry of paraffin-embedded human kidney tissue using PACO33508 at dilution of 1:100.