

HLA-B Antibody



PACO33560

Product Information

Size:

50ug

Reactivity:

Human

Source:

Rabbit

Isotype:

IgG

Applications:

ELISA, WB, IHC, IF

Recommended dilutions:

ELISA:1:2000-1:10000, WB:1:500-1:5000,
IHC:1:20-1:200, IF:1:50-1:200

Protein Background:

Involved in the presentation of foreign antigens to the immune system.

Gene ID:

HLA-B

Uniprot

Q96DW9

Synonyms:

HLA class I histocompatibility antigen, B-14 alpha chain (MHC class I antigen B*14),
HLA-B, HLAB

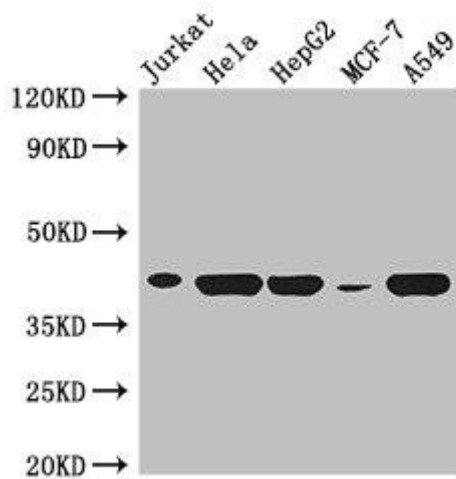
Immunogen:

Recombinant Human HLA-B protein (25-308AA).

Storage:

Preservative: 0.03% Proclin 300. Constituents: 50% Glycerol, 0.01M PBS, PH 7.4

Product Images



Western Blot

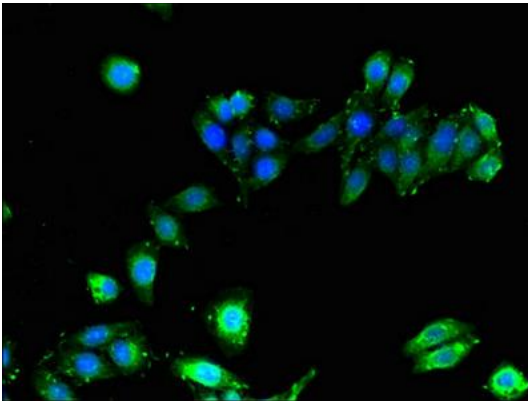
Positive WB detected in: Jurkat whole cell lysate, HeLa whole cell lysate, HepG2 whole cell lysate, MCF-7 whole cell lysate, A549 whole cell lysate
All lanes: HLA-B antibody at 3 μ g/ml

Secondary

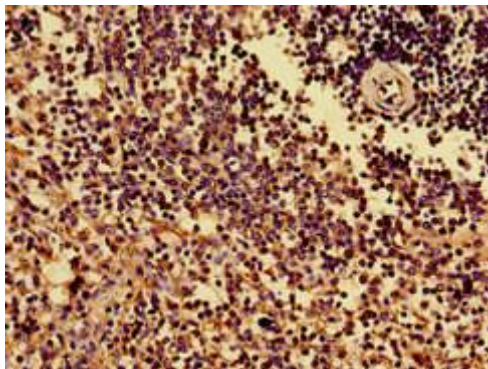
Goat polyclonal to rabbit IgG at 1/50000 dilution

Predicted band size: 41 kDa

Observed band size: 41 kDa



Immunofluorescent analysis of HepG2 cells using PACO33560 at dilution of 1:100.



Immunohistochemistry of paraffin-embedded human spleen tissue using PACO33560 at dilution of 1:100.