

# HLA-C Antibody



PACO33564

---

## Product Information

**Size:**

50ug

**Reactivity:**

Human

**Source:**

Rabbit

**Isotype:**

IgG

**Applications:**

ELISA, WB, IHC, IF

**Recommended dilutions:**

ELISA:1:2000-1:10000, WB:1:500-1:5000,  
IHC:1:20-1:200, IF:1:50-1:200

**Protein Background:**

Involved in the presentation of foreign antigens to the immune system.

**Gene ID:**

HLA-C

**Uniprot**

O78179

**Synonyms:**

HLA class I histocompatibility antigen, Cw-6 alpha chain (MHC class I antigen Cw\*6),  
HLA-C, HLAC

**Immunogen:**

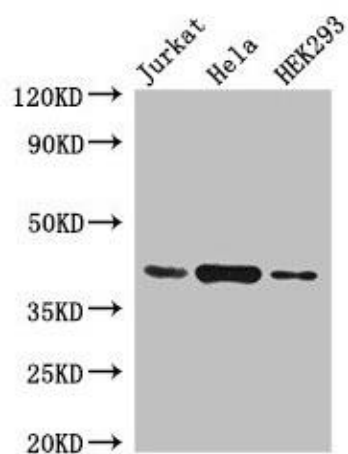
Recombinant Human HLA-C protein (25-308AA).

**Storage:**

Preservative: 0.03% Proclin 300. Constituents: 50% Glycerol, 0.01M PBS, PH 7.4

## Product Images

---



### Western Blot

Positive WB detected in: Jurkat whole cell lysate, HeLa whole cell lysate, HEK293 whole cell lysate

All lanes: HLA-C antibody at 4 $\mu$ g/ml

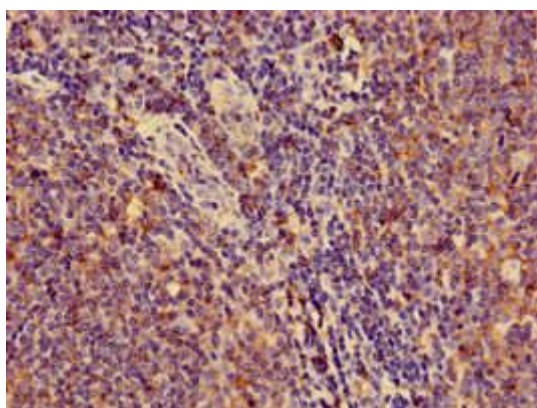
Secondary

Goat polyclonal to rabbit IgG at 1/50000 dilution

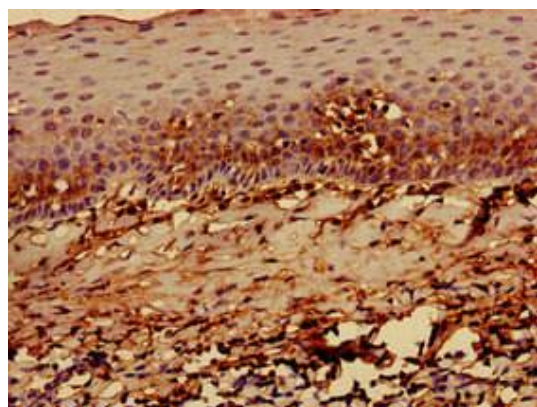
Predicted band size: 41 kDa

Observed band size: 41 kDa

.



Immunohistochemistry of paraffin-embedded human lymph node tissue using PACO33564 at dilution of 1:100.



Immunohistochemistry of paraffin-embedded human tonsil tissue using PACO33564 at dilution of 1:100.