

IdcC Antibody



PACO33688

Product Information

Size:

50ug

Reactivity:

Escherichia coli

Source:

Rabbit

Isotype:

IgG

Applications:

ELISA, WB

Recommended dilutions:

ELISA:1:2000-1:10000, WB:1:1000-1:5000

Protein Background:

LDC is constitutively but weakly expressed under various conditions.

Gene ID:

IdcC

Uniprot

P52095

Synonyms:

Constitutive lysine decarboxylase (LDC) (EC 4.1.1.18), IdcC, Idc IdcH

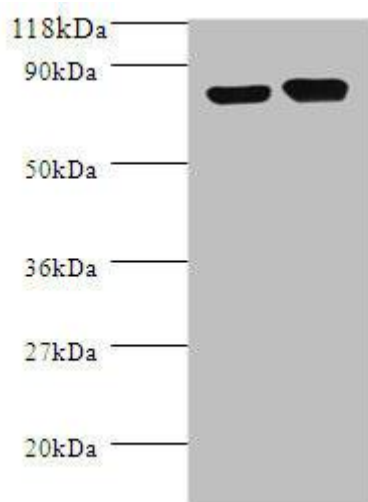
Immunogen:

Recombinant Escherichia coli Constitutive lysine decarboxylase protein (1-713AA).

Storage:

Preservative: 0.03% Proclin 300. Constituents: 50% Glycerol, 0.01M PBS, PH 7.4

Product Images



Western blot

All lanes: Lysine decarboxylase, constitutive antibody at 2 μ g/ml + DH5a whole cell lysate

Secondary

Goat polyclonal to rabbit IgG at 1/10000 dilution

Predicted band size: 81 kDa

Observed band size: 81 kDa