

PACO33764

Product Information

Size:

50ug

Reactivity:

Mouse, Human

Source:

Rabbit

Isotype:

IgG

Applications:

ELISA, WB

Recommended dilutions:

ELISA:1:2000-1:10000, WB:1:1000-1:5000

Protein Background:

Renin is a highly specific endopeptidase, related to pepsin, whose only known function is to generate angiotensin I from angiotensinogen in the plasma, initiating a cascade of reactions that produce an elevation of blood pressure and increased sodium retention by the kidney. Its function in the salivary gland is not understood.

Gene ID:

Ren2

Uniprot

P00796

Synonyms:

Renin-2 (EC 3.4.23.15) (Angiotensinogenase) (Submandibular gland renin) [Cleaved into: Renin-2 heavy chain; Renin-2 light chain], Ren2, Ren-2

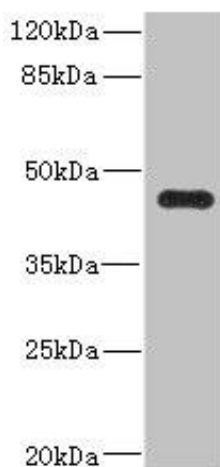
Immunogen:

Recombinant Mouse Renin-2 protein (64-351AA).

Storage:

Preservative: 0.03% Proclin 300. Constituents: 50% Glycerol, 0.01M PBS, PH 7.4

Product Images



Western blot

All lanes: Ren2 antibody at 2 μ g/ml + MCF-7 whole cell lysate

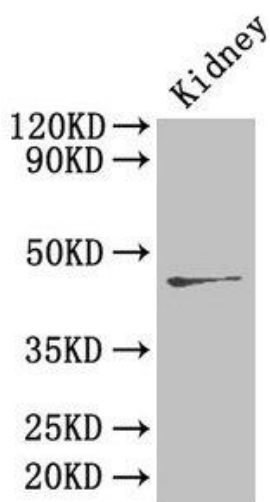
Secondary

Goat polyclonal to rabbit IgG at 1/10000 dilution

Predicted band size: 45 kDa

Observed band size: 45 kDa

.



Western Blot

Positive WB detected in: Mouse kidney tissue

All lanes: Ren2 antibody at 4 μ g/ml

Secondary

Goat polyclonal to rabbit IgG at 1/50000 dilution

Predicted band size: 45 kDa

Observed band size: 45 kDa

.