
Product Information

Size:

50ug

Reactivity:

Rat

Source:

Rabbit

Isotype:

IgG

Applications:

ELISA, WB, IHC

Recommended dilutions:

ELISA:1:2000-1:10000, WB:1:1000-1:5000,
IHC:1:20-1:200

Protein Background:

As a result of hemolysis, hemoglobin is found to accumulate in the kidney and is secreted in the urine. Haptoglobin captures, and combines with free plasma hemoglobin to allow hepatic recycling of heme iron and to prevent kidney damage. Haptoglobin also acts as an antioxidant, has antibacterial activity and plays a role in modulating many aspects of the acute phase response. Hemoglobin/haptoglobin complexes are rapidly cleared by the macrophage CD163 scavenger receptor expressed on the surface of liver Kupfer cells through an endocytic lysosomal degradation pathway.

Gene ID:

Hp

Uniprot

P06866

Synonyms:

Haptoglobin (Liver regeneration-related protein LRRG173) (Zonulin) [Cleaved into: Haptoglobin alpha chain; Haptoglobin beta chain], Hp

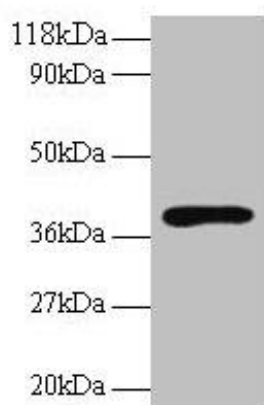
Immunogen:

Recombinant Rat Haptoglobin protein (19-346AA).

Storage:

Preservative: 0.03% Proclin 300. Constituents: 50% Glycerol, 0.01M PBS, PH 7.4

Product Images



Western blot

All lanes: Hp antibody at 2 μ g/ml + Rat live tissue

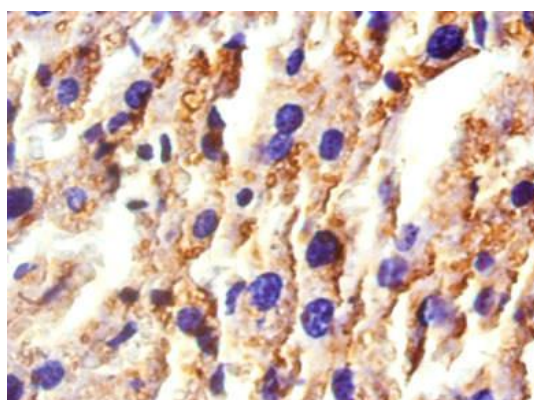
Secondary

Goat polyclonal to rabbit IgG at 1/10000 dilution

Predicted band size: 39, 43 kDa

Observed band size: 39 kDa

.



Immunohistochemistry of paraffin-embedded mouse liver tissue using PACO33768 at dilution of 1:50.