

# MT1E Antibody



PACO33800

---

## Product Information

**Size:**

50ug

**Reactivity:**

Human

**Source:**

Rabbit

**Isotype:**

IgG

**Applications:**

ELISA, IHC, IF

**Recommended dilutions:**

ELISA:1:2000-1:10000, IHC:1:10-1:100,  
IF:1:50-1:200

**Protein Background:**

Metallothioneins have a high content of cysteine residues that bind various heavy metals; these proteins are transcriptionally regulated by both heavy metals and glucocorticoids.

**Gene ID:**

MT1E

**Uniprot**

P04732

**Synonyms:**

Metallothionein-1E (MT-1E) (Metallothionein-IE) (MT-IE), MT1E

**Immunogen:**

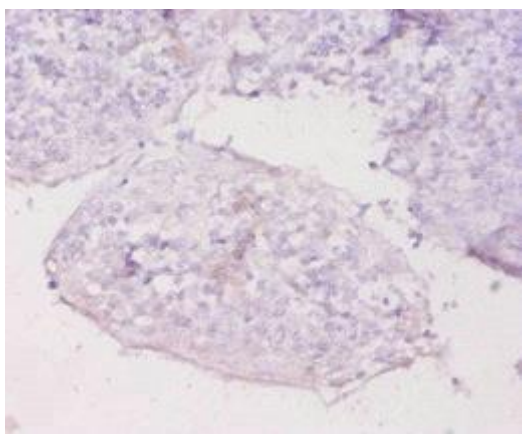
Recombinant Human Metallothionein-1E protein (4-59AA).

**Storage:**

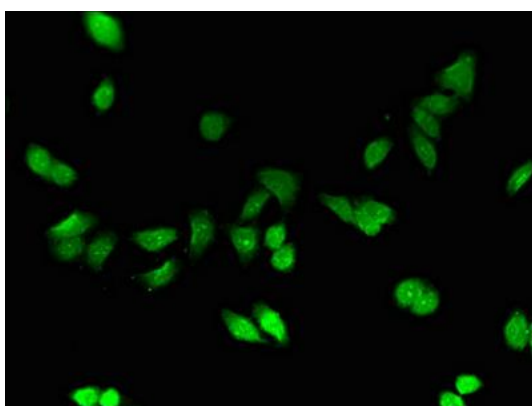
Preservative: 0.03% Proclin 300. Constituents: 50% Glycerol, 0.01M PBS, PH 7.4

## Product Images

---



Immunohistochemistry of paraffin-embedded human tonsil tissue using PACO33800 at dilution of 1:20.



Immunofluorescent analysis of HepG2 cells using PACO33800 at dilution of 1:100.