

MT1G Antibody



PACO33808

Product Information

Size:

50ug

Reactivity:

Human

Source:

Rabbit

Isotype:

IgG

Applications:

ELISA, IHC

Recommended dilutions:

ELISA:1:2000-1:10000, IHC:1:20-1:200

Protein Background:

Metallothioneins have a high content of cysteine residues that bind various heavy metals; these proteins are transcriptionally regulated by both heavy metals and glucocorticoids.

Gene ID:

MT1G

Uniprot

P13640

Synonyms:

Metallothionein-1G (MT-1G) (Metallothionein-1K) (MT-1K) (Metallothionein-IG) (MT-IG), MT1G, MT1K MT1M

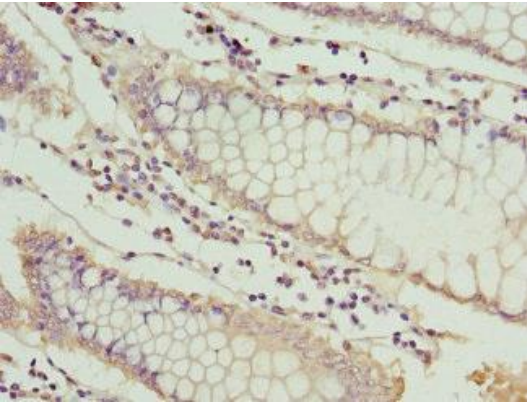
Immunogen:

Recombinant Human Metallothionein-1G protein (1-59AA).

Storage:

Preservative: 0.03% Proclin 300. Constituents: 50% Glycerol, 0.01M PBS, PH 7.4

Product Images



Immunohistochemistry of paraffin-embedded human colon cancer using PACO33808 at dilution of 1: 100.