

PACO33920

Product Information

Size:

50ug

Reactivity:

Escherichia coli

Source:

Rabbit

Isotype:

IgG

Applications:

ELISA, WB

Recommended dilutions:

ELISA:1:2000-1:10000, WB:1:500-1:5000

Protein Background:

The ethanolamine ammonialyase microcompartment of Escherichia coli represents such a class of cytosolic organelles that enables bacteria to survive on small organic molecules such as ethanolamine as the sole source for carbon and nitrogen.

Gene ID:

eutC

Uniprot

P19636

Synonyms:

Ethanolamine ammonia-lyase light chain (EC 4.3.1.7) (Ethanolamine ammonia-lyase small subunit), eutC

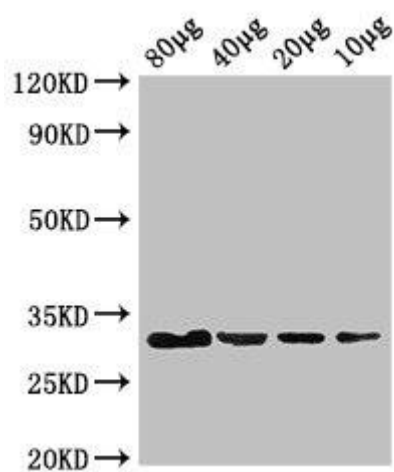
Immunogen:

Recombinant Escherichia coli Ethanolamine ammonia-lyase light chain protein (1-295AA).

Storage:

Preservative: 0.03% Proclin 300. Constituents: 50% Glycerol, 0.01M PBS, PH 7.4

Product Images



Western Blot

Positive WB detected in: Rosseta bacteria lysate at 80µg, 40µg, 20µg, 10µg

All lanes: eutC antibody at 3µg/ml

Secondary

Goat polyclonal to rabbit IgG at 1/50000 dilution

predicted band size: 32 kDa

observed band size: 32 kDa