

HLA-DRB1 Antibody



PACO33972

Product Information

Size:

50ug

Reactivity:

Human

Source:

Rabbit

Isotype:

IgG

Applications:

ELISA, WB, IF

Recommended dilutions:

ELISA:1:2000-1:10000, WB:1:1000-1:5000,
IF:1:50-1:200

Protein Background:

Gene ID:

HLA-DRB1

Uniprot

Q95IE3

Synonyms:

HLA class II histocompatibility antigen, DRB1-12 beta chain (MHC class II antigen DRB1*12) (DR-12) (DR12), HLA-DRB1

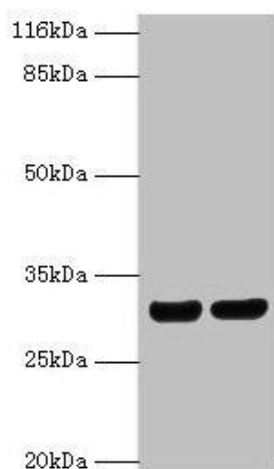
Immunogen:

Recombinant Human HLA class II histocompatibility antigen, DRB1-12 & beta; chain protein (30-266AA).

Storage:

Preservative: 0.03% Proclin 300. Constituents: 50% Glycerol, 0.01M PBS, PH 7.4

Product Images



Western blot

All lanes: HLA-DRB1 antibody at 2 μ g/ml

Lane 1: A375 whole cell lysate

Lane 2: Raji whole cell lysate

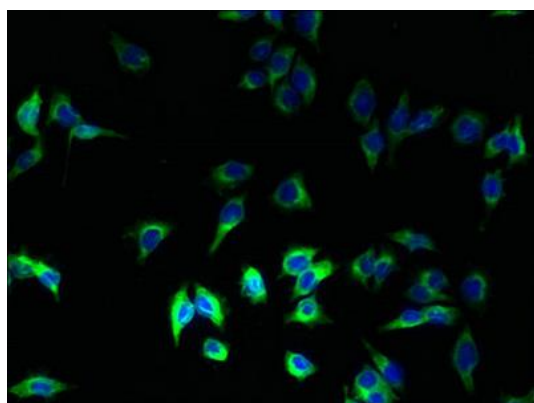
Secondary

Goat polyclonal to rabbit IgG at 1/10000 dilution

Predicted band size: 30 kDa

Observed band size: 30 kDa

.



Immunofluorescent analysis of A375 cells using PACO33972 at dilution of 1:100 and Alexa Fluor 488-conjugated AffiniPure Goat Anti-Rabbit IgG(H+L).