

Ces1c Antibody



PACO34470

Product Information

Size:

50ug

Reactivity:

Mouse, Human, Rat

Source:

Rabbit

Isotype:

IgG

Applications:

ELISA, WB, IHC

Recommended dilutions:

ELISA:1:2000-1:10000, WB:1:1000-1:5000,
IHC:1:10-1:200

Protein Background:

Involved in the detoxification of xenobiotics and in the activation of ester and amide prodrugs. Involved in the extracellular metabolism of lung surfactant.

Gene ID:

Ces1c

Uniprot

P23953

Synonyms:

Carboxylesterase 1C (EC 3.1.1.1) (Liver carboxylesterase N) (Lung surfactant convertase) (PES-N), Ces1c, Es1

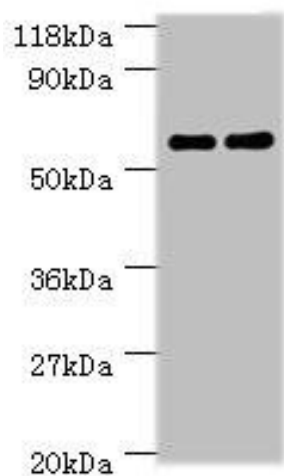
Immunogen:

Recombinant Mouse Carboxylesterase 1C protein (19-550AA).

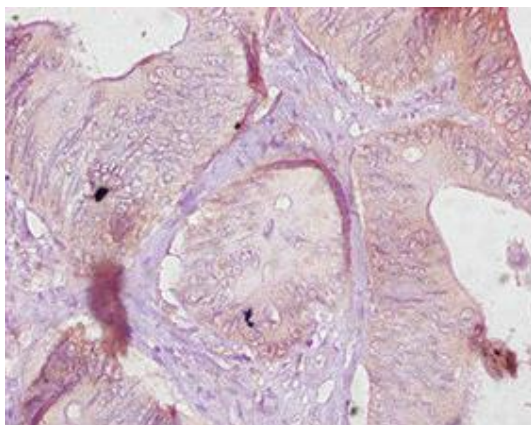
Storage:

Preservative: 0.03% Proclin 300. Constituents: 50% Glycerol, 0.01M PBS, PH 7.4

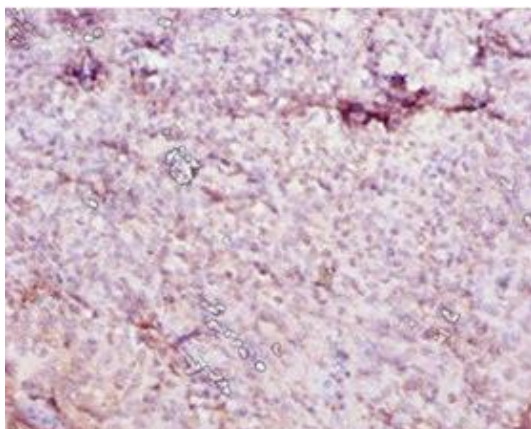
Product Images



Western blot. All lanes: Ces1c antibody at 2 μ g/ml. Lane 1: Mouse liver tissue. Lane 2: Rat liver tissue. Secondary: Goat polyclonal to rabbit IgG at 1/10000 dilution. Predicted band size: 62 kDa. Observed band size: 62 kDa.



Immunohistochemistry of paraffin-embedded human colon cancer using PACO34470 at dilution of 1:10.



Immunohistochemistry of paraffin-embedded human tonsil tissue using PACO34470 at dilution of 1:10.