

Product Information

Size:

50ug

Reactivity:

Human

Source:

Rabbit

Isotype:

IgG

Applications:

ELISA, WB, IHC

Recommended dilutions:

ELISA:1:2000-1:10000, WB:1:500-1:2000,
IHC:1:20-1:200

Protein Background:

Promotes the release of prenylated target proteins from cellular membranes. Modulates the activity of prenylated or palmitoylated Ras family members by regulating their subcellular location. Required for normal ciliary targeting of farnesylated target proteins, such as INPP5E. Modulates the subcellular location of target proteins by acting as a GTP specific dissociation inhibitor (GDI). Increases the affinity of ARL3 for GTP by several orders of magnitude. Stabilizes ARL3-GTP by decreasing the nucleotide dissociation rate.

Gene ID:

PDE6D

Uniprot

O43924

Synonyms:

Retinal rod rhodopsin-sensitive cGMP 3',5'-cyclic phosphodiesterase subunit delta (GMP-PDE delta) (Protein p17), PDE6D, PDED

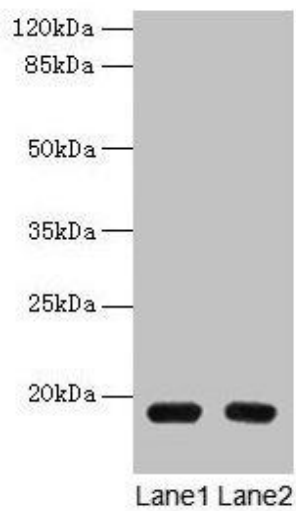
Immunogen:

Recombinant Human Retinal rod rhodopsin-sensitive cGMP 3',5'-cyclic phosphodiesterase subunit delta protein (1-150AA).

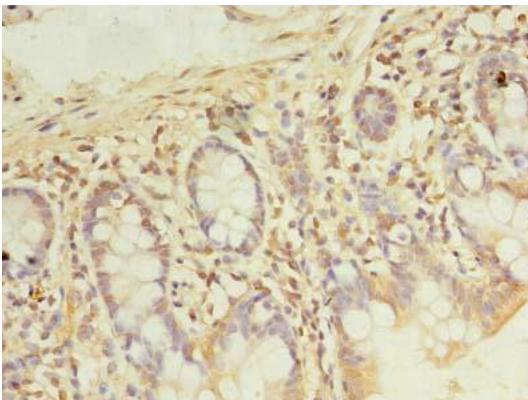
Storage:

Preservative: 0.03% Proclin 300. Constituents: 50% Glycerol, 0.01M PBS, PH 7.4

Product Images



Western blot. All lanes: PDE6D antibody at 1.5 μ g/ml. Lane 1: A549 whole cell lysate. Lane 2: MCF-7 whole cell lysate. Secondary. Goat polyclonal to rabbit IgG at 1/10000 dilution. Predicted band size: 18 kDa. Observed band size: 18 kDa.



Immunohistochemistry of paraffin-embedded human small intestine tissue using PACO35138 at dilution of 1:100.