

# ZG16 Antibody



PACO35170

---

## Product Information

**Size:**

50ug

**Reactivity:**

Human

**Source:**

Rabbit

**Isotype:**

IgG

**Applications:**

ELISA, IHC

**Recommended dilutions:**

ELISA:1:2000-1:10000, IHC:1:20-1:200

**Protein Background:**

May play a role in protein trafficking. May act as a linker molecule between the submembranous matrix on the luminal side of zymogen granule membrane (ZGM) and aggregated secretory proteins during granule formation in the TGN.

**Gene ID:**

ZG16

**Uniprot**

O60844

**Synonyms:**

Zymogen granule membrane protein 16 (Zymogen granule protein 16) (hZG16)  
(Secretory lectin ZG16), ZG16

**Immunogen:**

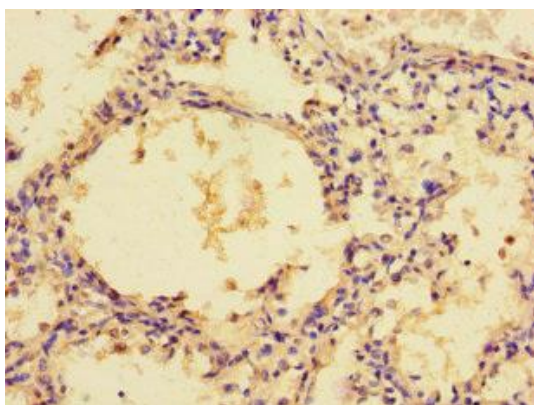
Recombinant Human Zymogen granule membrane protein 16 protein (17-167AA).

**Storage:**

Preservative: 0.03% Proclin 300. Constituents: 50% Glycerol, 0.01M PBS, PH 7.4

## Product Images

---



Immunohistochemistry of paraffin-embedded human lung tissue using PACO35170 at dilution of 1:100.