

PACO35366

Product Information

Size:

50ug

Reactivity:

Human, Mouse

Source:

Rabbit

Isotype:

IgG

Applications:

ELISA, WB, IHC, IF

Recommended dilutions:

ELISA:1:2000-1:10000, WB:1:500-1:2000,
IHC:1:20-1:200, IF:1:50-1:200

Protein Background:

May be involved in neural development. Involved in regulation of osteoblast function and bone formation. Involved in matrix vesicle release by osteoblasts; this function seems to involve maintenance of the actin cytoskeleton. May be involved in cellular trafficking of SERT and thereby in regulation of serotonin uptake.

Gene ID:

GPM6B

Uniprot

Q13491

Synonyms:

Neuronal membrane glycoprotein M6-b (M6b), GPM6B, M6B

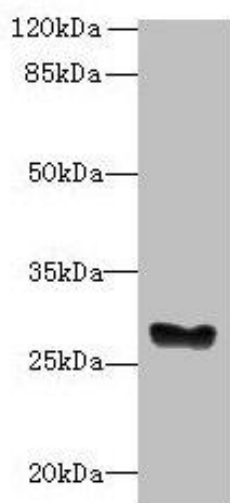
Immunogen:

Recombinant Human Neuronal membrane glycoprotein M6-b protein (1-64AA).

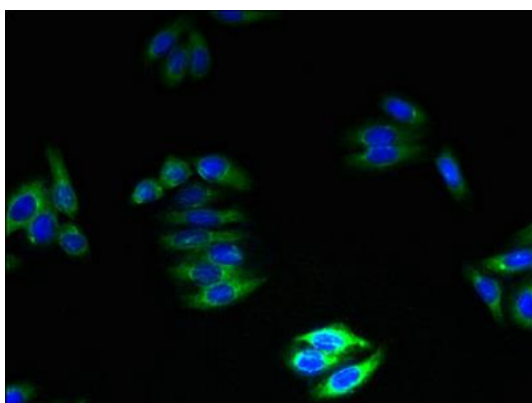
Storage:

Preservative: 0.03% Proclin 300. Constituents: 50% Glycerol, 0.01M PBS, PH 7.4

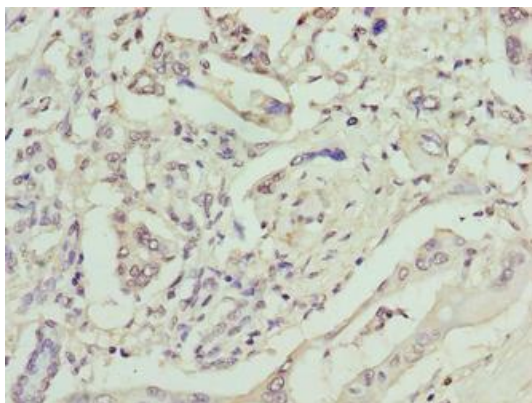
Product Images



Western blot. All lanes: GPM6B antibody at 5 μ g/ml + Mouse brain tissue. Secondary. Goat polyclonal to rabbit IgG at 1/10000 dilution. Predicted band size: 29, 27, 34, 37 kDa. Observed band size: 29 kDa.



Immunofluorescent analysis of HepG2 cells using PACO35366 at dilution of 1:100 and Alexa Fluor 488-conjugated AffiniPure Goat Anti-Rabbit IgG(H+L).



Immunohistochemistry of paraffin-embedded human pancreatic cancer using PACO35366 at dilution of 1:100.