

PACO35438

Product Information

Size:

50ug

Reactivity:

Human

Source:

Rabbit

Isotype:

IgG

Applications:

ELISA, IHC

Recommended dilutions:

ELISA:1:2000-1:10000, IHC:1:20-1:200

Protein Background:

May be a substrate-recognition component of a SCF-like ECS (Elongin-Cullin-SOCS-box protein) E3 ubiquitin ligase complex which mediates the ubiquitination and subsequent proteasomal degradation of target proteins.

Gene ID:

RAB40B

Uniprot

Q12829

Synonyms:

Ras-related protein Rab-40B (SOCS box-containing protein RAR) (Protein Rar), RAB40B, SEC4L

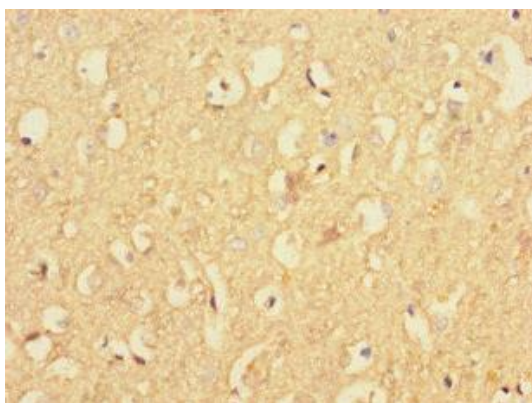
Immunogen:

Recombinant Human Ras-related protein Rab-40B protein (1-278AA).

Storage:

Preservative: 0.03% Proclin 300. Constituents: 50% Glycerol, 0.01M PBS, PH 7.4

Product Images



Immunohistochemistry of paraffin-embedded human brain tissue using PACO35438 at dilution of 1:100.