

PSG3 Antibody



PACO35478

Product Information

Size:

50ug

Reactivity:

Human

Source:

Rabbit

Isotype:

IgG

Applications:

ELISA, WB, IHC

Recommended dilutions:

ELISA:1:2000-1:10000, WB:1:500-1:2000,
IHC:1:20-1:200

Protein Background:**Gene ID:**

PSG3

Uniprot

Q16557

Synonyms:

Pregnancy-specific beta-1-glycoprotein 3 (PS-beta-G-3) (PSBG-3) (Pregnancy-specific glycoprotein 3) (Carcinoembryonic antigen SG5), PSG3

Immunogen:

Recombinant Human Pregnancy-specific beta-1-glycoprotein 3 protein (35-310AA).

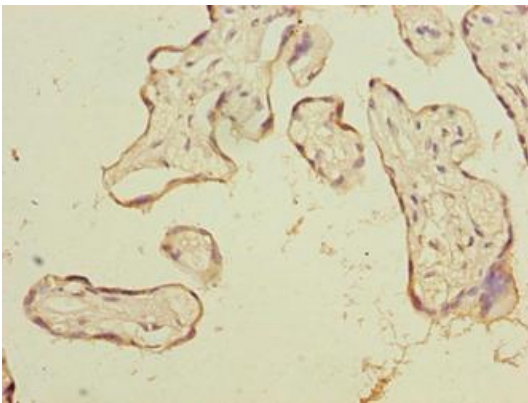
Storage:

Preservative: 0.03% Proclin 300. Constituents: 50% Glycerol, 0.01M PBS, PH 7.4

Product Images



Western blot. All lanes: PSG3 antibody at 10 μ g/ml + HepG2 whole cell lysate. Secondary. Goat polyclonal to rabbit IgG at 1/10000 dilution. Predicted band size: 48 kDa. Observed band size: 48 kDa.



Immunohistochemistry of paraffin-embedded human placenta tissue using PACO35478 at dilution of 1:100.