

Product Information

Size:

50ug

Reactivity:

Human, Mouse

Source:

Rabbit

Isotype:

IgG

Applications:

ELISA, WB

Recommended dilutions:

ELISA:1:2000-1:10000, WB:1:1000-1:5000

Protein Background:

Acts as an A-kinase anchoring protein by binding to the type II regulatory subunit of protein kinase A and anchoring it to the mitochondrion. Also involved in synchronization of mitochondrial fission. Plays a role in the maturation of phagosomes that engulf pathogens, such as S.aureus and M. tuberculosis. Plays an important role in the control of melanin production and melanosome biogenesis. In concert with RAB38, regulates the proper trafficking of melanogenic enzymes TYR, TYRP1 and DCT/TYRP2 to melanosomes in melanocytes.

Gene ID:

RAB32

Uniprot

Q13637

Synonyms:

Ras-related protein Rab-32, RAB32

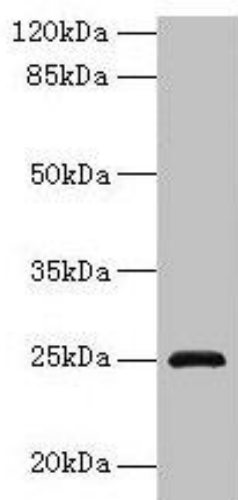
Immunogen:

Recombinant Human Ras-related protein Rab-32 protein (2-225AA).

Storage:

Preservative: 0.03% Proclin 300. Constituents: 50% Glycerol, 0.01M PBS, PH 7.4

Product Images



Western blot. All lanes: RAB32 antibody at 3 μ g/ml + Mouse kidney tissue. Secondary. Goat polyclonal to rabbit IgG at 1/10000 dilution. Predicted band size: 25 kDa. Observed band size: 25 kDa.