

PACO35518

---

## Product Information

**Size:**

50ug

**Reactivity:**

Human

**Source:**

Rabbit

**Isotype:**

IgG

**Applications:**

ELISA, WB, IF

**Recommended dilutions:**

ELISA:1:2000-1:10000, WB:1:1000-1:5000,  
IF:1:50-1:200

**Protein Background:**

Orphan receptor involved in normal circadian rhythm behavior. Acts through the G-protein subclass G(z)-alpha and has an agonist-independent basal activity to repress cAMP production.

**Gene ID:**

GPR176

**Uniprot**

Q14439

**Synonyms:**

G-protein coupled receptor 176 (HB-954), GPR176

**Immunogen:**

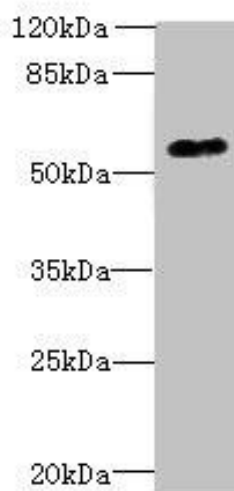
Recombinant Human G-protein coupled receptor 176 protein (321-515AA).

**Storage:**

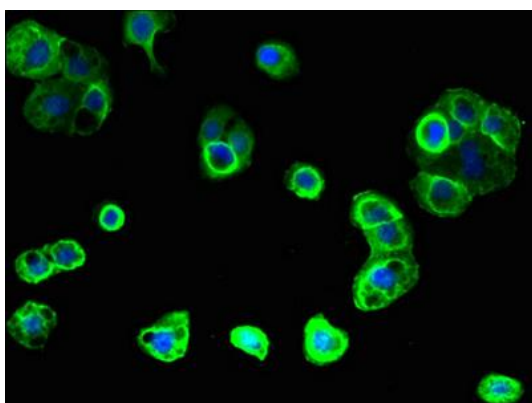
Preservative: 0.03% Proclin 300. Constituents: 50% Glycerol, 0.01M PBS, PH 7.4

## Product Images

---



Western blot. All lanes: GPR176 antibody at 10 $\mu$ g/ml + A431 whole cell lysate. Secondary. Goat polyclonal to rabbit IgG at 1/10000 dilution. Predicted band size: 57, 53 kDa. Observed band size: 57 kDa.



Immunofluorescent analysis of A431 cells using PACO35518 at dilution of 1:100 and Alexa Fluor 488-conjugated AffiniPure Goat Anti-Rabbit IgG(H+L).