

# BATF Antibody



PACO35546

---

## Product Information

**Size:**

50ug

**Reactivity:**

Human, Mouse

**Source:**

Rabbit

**Isotype:**

IgG

**Applications:**

ELISA, WB, IHC

**Recommended dilutions:**

ELISA:1:2000-1:10000, WB:1:500-1:2000,  
IHC:1:20-1:200

**Protein Background:**

**Gene ID:**

BATF

**Uniprot**

Q16520

**Synonyms:**

Basic leucine zipper transcriptional factor ATF-like (B-cell-activating transcription factor) (B-ATF) (SF-HT-activated gene 2 protein) (SFA-2), BATF

**Immunogen:**

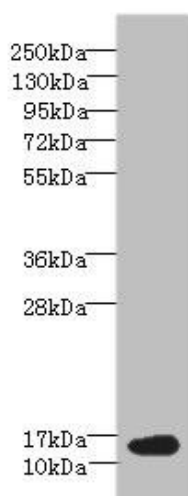
Recombinant Human Basic leucine zipper transcriptional factor ATF-like protein (1-125AA).

**Storage:**

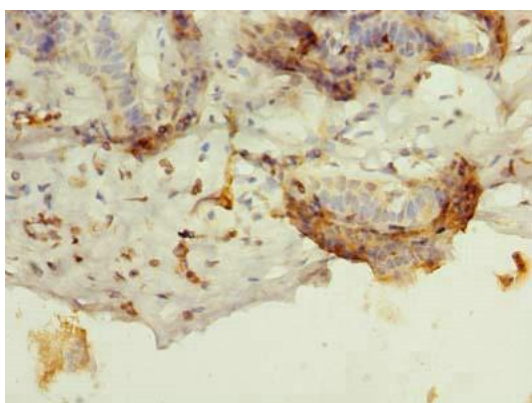
Preservative: 0.03% Proclin 300. Constituents: 50% Glycerol, 0.01M PBS, PH 7.4

## Product Images

---



Western blot. All lanes: BATF antibody at 6 $\mu$ g/ml + NIH/3T3 whole cell lysate. Secondary. Goat polyclonal to rabbit IgG at 1/10000 dilution. Predicted band size: 15 kDa. Observed band size: 15 kDa.



Immunohistochemistry of paraffin-embedded human breast cancer using PACO35546 at dilution of 1:100.