

# IZUMO4 Antibody



PACO35830

---

## Product Information

**Size:**

50ug

**Reactivity:**

Human, Rat

**Source:**

Rabbit

**Isotype:**

IgG

**Applications:**

ELISA, WB, IHC, IF

**Recommended dilutions:**

ELISA:1:2000-1:10000, WB:1:500-1:5000,  
IHC:1:20-1:200, IF:1:50-1:200

**Protein Background:**

**Gene ID:**

IZUMO4

**Uniprot**

Q1ZYL8

**Synonyms:**

Izumo sperm-egg fusion protein 4 (Sperm 22 kDa protein c113), IZUMO4, C19orf36

**Immunogen:**

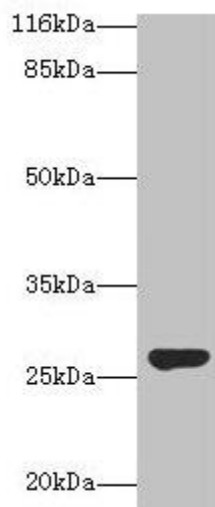
Recombinant Human Izumo sperm-egg fusion protein 4 protein (16-214AA).

**Storage:**

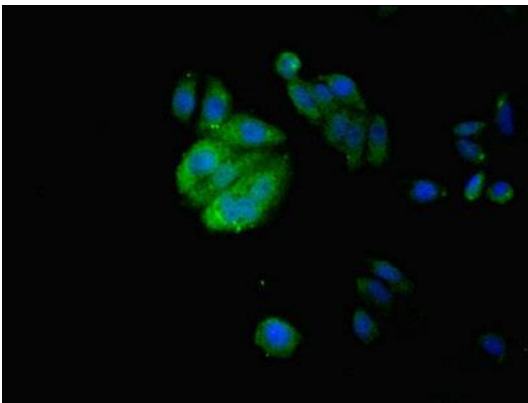
Preservative: 0.03% Proclin 300. Constituents: 50% Glycerol, 0.01M PBS, PH 7.4

## Product Images

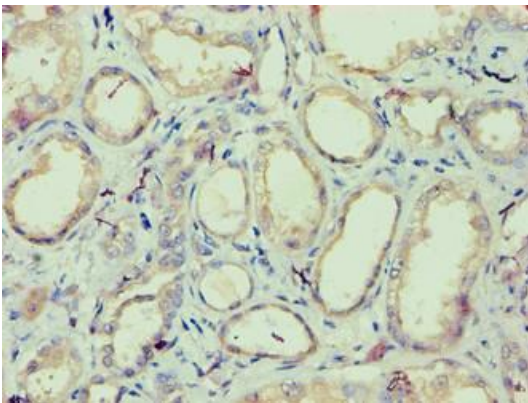
---



Western blot. All lanes: IZUMO4 antibody at 2 $\mu$ g/ml + Rat gonadal tissue. Secondary. Goat polyclonal to rabbit IgG at 1/10000 dilution. Predicted band size: 27, 25, 18, 19 kDa. Observed band size: 27 kDa.



Immunofluorescent analysis of HepG2 cells using PACO35830 at dilution of 1:100 and Alexa Fluor 488-conjugated AffiniPure Goat Anti-Rabbit IgG(H+L).



Immunohistochemistry of paraffin-embedded human kidney tissue using PACO35830 at dilution of 1:100.