

# KIF26B Antibody



PACO35838

---

## Product Information

**Size:**

50ug

**Reactivity:**

Human

**Source:**

Rabbit

**Isotype:**

IgG

**Applications:**

ELISA, IHC

**Recommended dilutions:**

ELISA:1:2000-1:10000, IHC:1:20-1:200

**Protein Background:**

Essential for embryonic kidney development. Plays an important role in the compact adhesion between mesenchymal cells adjacent to the ureteric buds, possibly by interacting with MYH10. This could lead to the establishment of the basolateral integrity of the mesenchyme and the polarized expression of ITGA8, which maintains the GDNF expression required for further ureteric bud attraction. Although it seems to lack ATPase activity it is constitutively associated with microtubules.

**Gene ID:**

KIF26B

**Uniprot**

Q2KJY2

**Synonyms:**

Kinesin-like protein KIF26B, KIF26B

**Immunogen:**

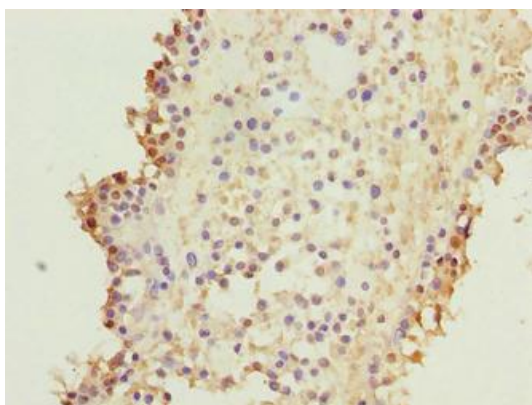
Recombinant Human Kinesin-like protein KIF26B protein (8-133AA).

**Storage:**

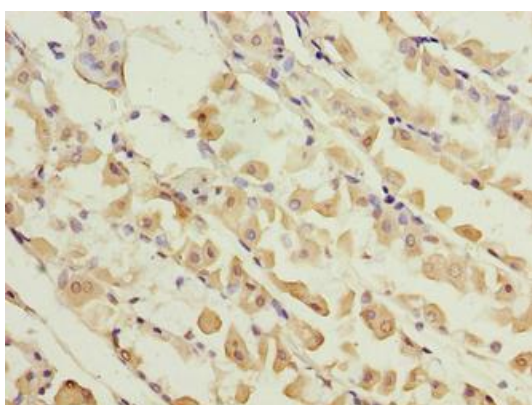
Preservative: 0.03% Proclin 300. Constituents: 50% Glycerol, 0.01M PBS, PH 7.4

## Product Images

---



Immunohistochemistry of paraffin-embedded human breast cancer using PACO35838 at dilution of 1:100.



Immunohistochemistry of paraffin-embedded human gastric cancer using PACO35838 at dilution of 1:100.