

# KRT71 Antibody



PACO35934

---

## Product Information

**Size:**

50ug

**Reactivity:**

Human

**Source:**

Rabbit

**Isotype:**

IgG

**Applications:**

ELISA, IHC

**Recommended dilutions:**

ELISA:1:2000-1:10000, IHC:1:20-1:200

**Protein Background:**

Plays a central role in hair formation. Essential component of keratin intermediate filaments in the inner root sheath (IRS) of the hair follicle.

**Gene ID:**

KRT71

**Uniprot**

Q3SY84

**Synonyms:**

Keratin, type II cytoskeletal 71 (Cytokeratin-71) (CK-71) (Keratin-71) (K71) (Type II inner root sheath-specific keratin-K6irs1) (Keratin 6 irs) (hK6irs) (hK6irs1) (Type-II keratin Kb34), KRT71, K6IRS1 KB34 KRT6IRS1

**Immunogen:**

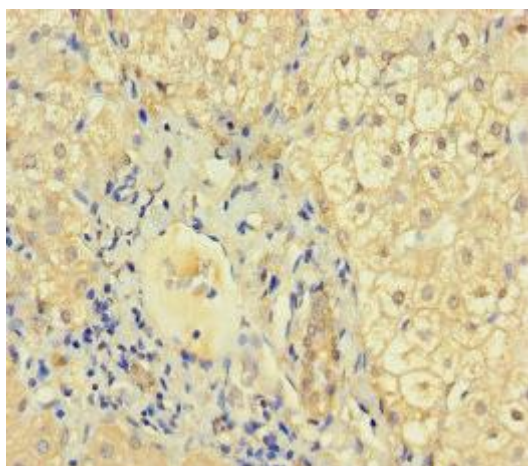
Recombinant Human Keratin, type II cytoskeletal 71 protein (201-500AA).

**Storage:**

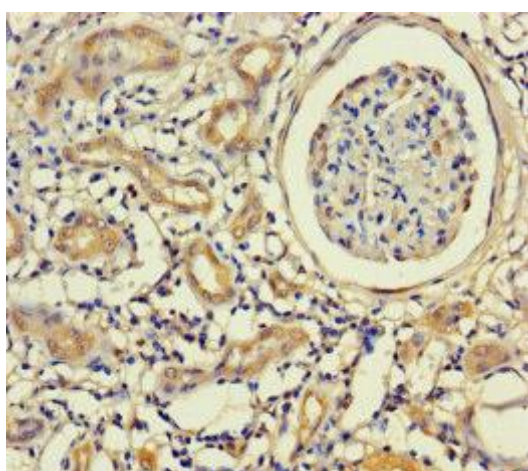
Preservative: 0.03% Proclin 300. Constituents: 50% Glycerol, 0.01M PBS, PH 7.4

## Product Images

---



Immunohistochemistry of paraffin-embedded human liver cancer using PACO35934 at dilution of 1:100.



Immunohistochemistry of paraffin-embedded human kidney tissue using PACO35934 at dilution of 1:100.