

SLC25A35 Antibody



PACO35990

Product Information

Size:

50ug

Reactivity:

Human

Source:

Rabbit

Isotype:

IgG

Applications:

ELISA, IHC

Recommended dilutions:

ELISA:1:2000-1:10000, IHC:1:20-1:200

Protein Background:

Gene ID:

SLC25A35

Uniprot

Q3KQZ1

Synonyms:

Solute carrier family 25 member 35, SLC25A35

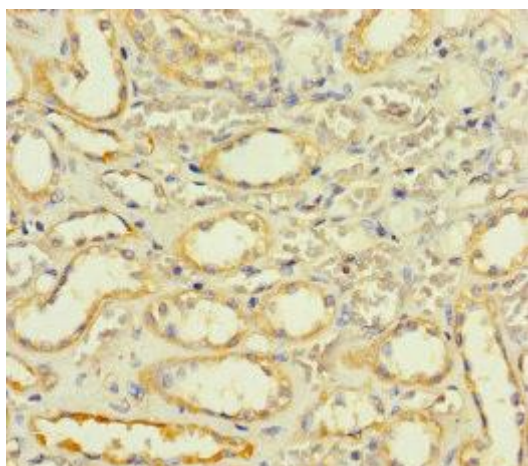
Immunogen:

Recombinant Human Solute carrier family 25 member 35 protein (120-168AA).

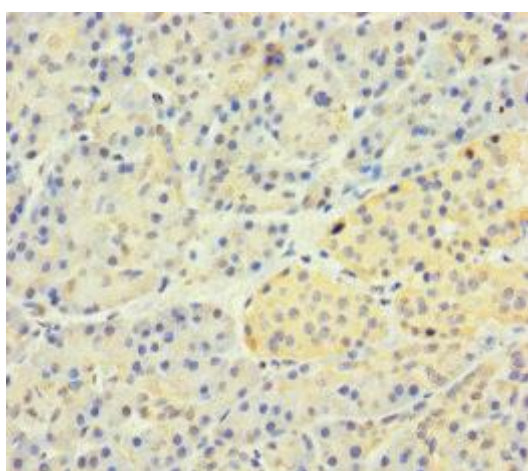
Storage:

Preservative: 0.03% Proclin 300. Constituents: 50% Glycerol, 0.01M PBS, PH 7.4

Product Images



Immunohistochemistry of paraffin-embedded human kidney tissue using PACO35990 at dilution of 1:100.



Immunohistochemistry of paraffin-embedded human pancreatic tissue using PACO35990 at dilution of 1:100.