

SLC36A3 Antibody



PACO36022

Product Information

Size:

50ug

Reactivity:

Human

Source:

Rabbit

Isotype:

IgG

Applications:

ELISA, IHC, IF

Recommended dilutions:

ELISA:1:2000-1:10000, IHC:1:20-1:200,
IF:1:50-1:200

Protein Background:**Gene ID:**

SLC36A3

Uniprot

Q495N2

Synonyms:

Proton-coupled amino acid, transporter 3 (Proton/amino acid, transporter 3) (Solute carrier family 36 member 3) (Tramdorin-2), SLC36A3, PAT3 TRAMD2

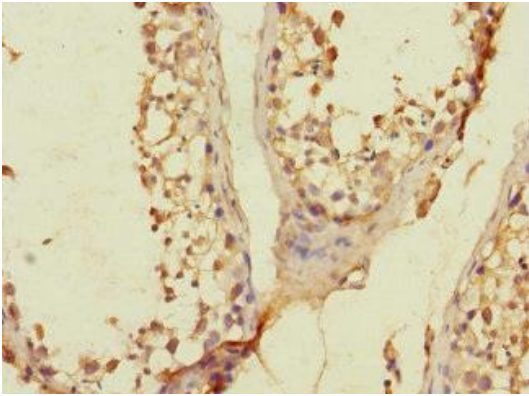
Immunogen:

Recombinant Human Proton-coupled amino acid, transporter 3 protein (1-46AA).

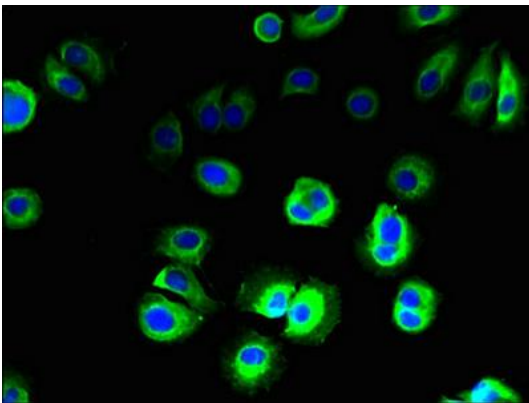
Storage:

Preservative: 0.03% Proclin 300. Constituents: 50% Glycerol, 0.01M PBS, PH 7.4

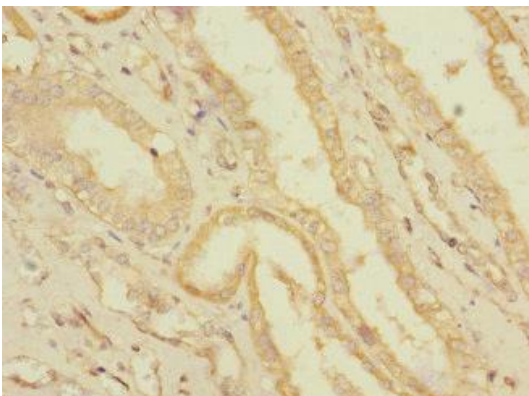
Product Images



Immunohistochemistry of paraffin-embedded human testis tissue using PACO36022 at dilution of 1:100.



Immunofluorescent analysis of MCF-7 cells using PACO36022 at dilution of 1:100 and Alexa Fluor 488-conjugated AffiniPure Goat Anti-Rabbit IgG(H+L).



Immunohistochemistry of paraffin-embedded human kidney tissue using PACO36022 at dilution of 1:100.