

Product Information

Size:

50ug

Reactivity:

Human

Source:

Rabbit

Isotype:

IgG

Applications:

ELISA, IHC

Recommended dilutions:

ELISA:1:2000-1:10000, IHC:1:20-1:200

Protein Background:

Involved in the maturation of the mitochondrial respiratory chain complex IV subunit MT-CO2/COX2. Thereby, may regulate early steps of complex IV assembly. Mitochondrial respiratory chain complex IV or cytochrome c oxidase is the component of the respiratory chain that catalyzes the transfer of electrons from intermembrane space cytochrome c to molecular oxygen in the matrix and as a consequence contributes to the proton gradient involved in mitochondrial ATP synthesis. May also be required for efficient formation of respiratory supercomplexes comprised of complexes III and IV.

Gene ID:

COA6

Uniprot

Q5JTJ3

Synonyms:

Cytochrome c oxidase assembly factor 6 homolog, COA6, C1orf31

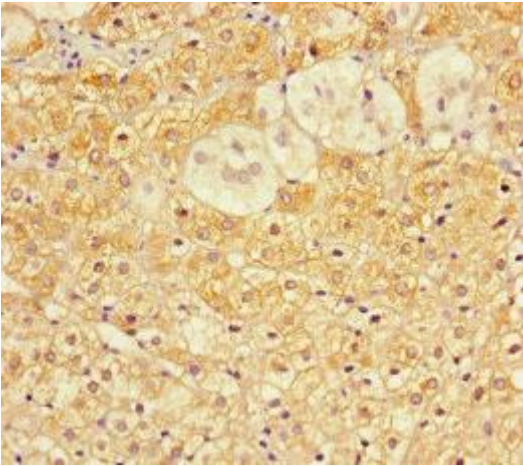
Immunogen:

Recombinant Human Cytochrome c oxidase assembly factor 6 homolog protein (1-125AA).

Storage:

Preservative: 0.03% Proclin 300. Constituents: 50% Glycerol, 0.01M PBS, PH 7.4

Product Images



Immunohistochemistry of paraffin-embedded human adrenal gland tissue using PACO36110 at dilution of 1:100.