

PACO36126

---

## Product Information

**Size:**

50ug

**Reactivity:**

Human

**Source:**

Rabbit

**Isotype:**

IgG

**Applications:**

ELISA, IHC

**Recommended dilutions:**

ELISA:1:2000-1:10000, IHC:1:20-1:200

**Protein Background:**

Displays arylsulfatase activity at neutral pH, when co-expressed with SUMF1; arylsulfatase activity is measured in the secretion medium of retinal cell line, but no activity is recorded when measured in cell extracts.

**Gene ID:**

ARSI

**Uniprot**

Q5FYB1

**Synonyms:**

Arylsulfatase I (ASI) (EC 3.1.6. -), ARSI

**Immunogen:**

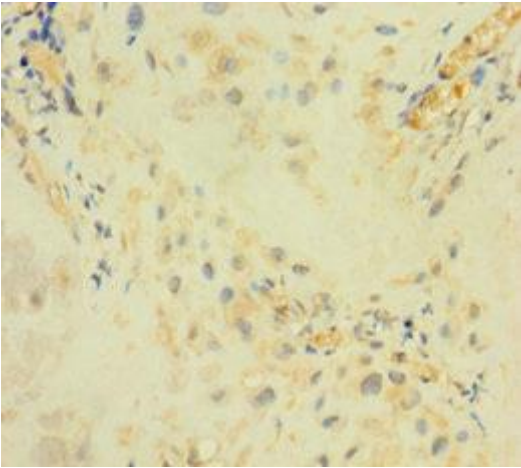
Recombinant Human Arylsulfatase I protein (301-569AA).

**Storage:**

Preservative: 0.03% Proclin 300. Constituents: 50% Glycerol, 0.01M PBS, PH 7.4

## Product Images

---



Immunohistochemistry of paraffin-embedded human placenta tissue using PACO36126 at dilution of 1:100.