

# FBLN7 Antibody



PACO36166

---

## Product Information

**Size:**

50ug

**Reactivity:**

Human

**Source:**

Rabbit

**Isotype:**

IgG

**Applications:**

ELISA, IHC

**Recommended dilutions:**

ELISA:1:2000-1:10000, IHC:1:20-1:200

**Protein Background:**

An adhesion molecule that interacts with extracellular matrix molecules in developing teeth and may play important roles in differentiation and maintenance of odontoblasts as well as in dentin formation.

**Gene ID:**

FBLN7

**Uniprot**

Q53RD9

**Synonyms:**

Fibulin-7 (FIBL-7), FBLN7, TM14

**Immunogen:**

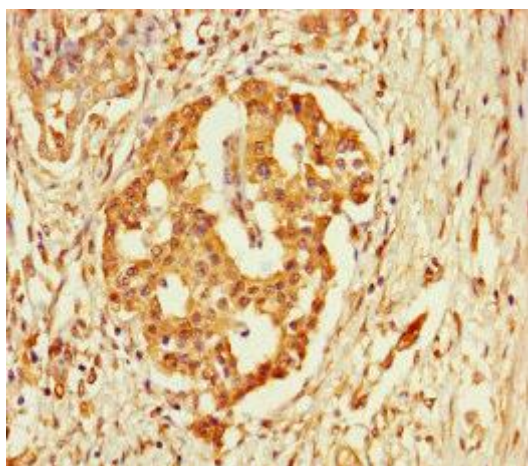
Recombinant Human Fibulin-7 protein (25-393AA).

**Storage:**

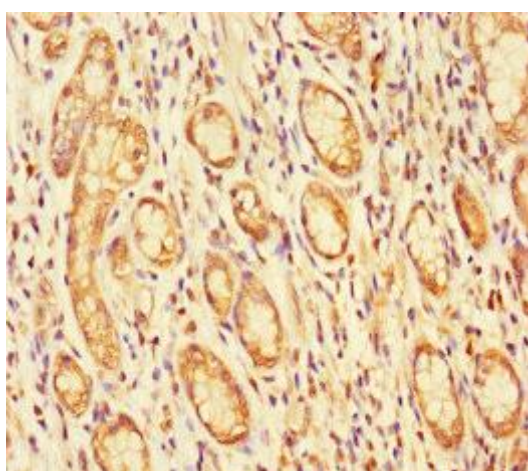
Preservative: 0.03% Proclin 300. Constituents: 50% Glycerol, 0.01M PBS, PH 7.4

## Product Images

---



Immunohistochemistry of paraffin-embedded human pancreatic cancer using PACO36166 at dilution of 1:100.



Immunohistochemistry of paraffin-embedded human gastric cancer using PACO36166 at dilution of 1:100.