

YIF1B Antibody



PACO36170

Product Information

Size:

50ug

Reactivity:

Human, Rat

Source:

Rabbit

Isotype:

IgG

Applications:

ELISA, WB, IHC, IF

Recommended dilutions:

ELISA:1:2000-1:10000, WB:1:500-1:5000,
IHC:1:20-1:200, IF:1:50-1:200

Protein Background:

Gene ID:

YIF1B

Uniprot

Q5BJH7

Synonyms:

Protein YIF1B (YIP1-interacting factor homolog B), YIF1B

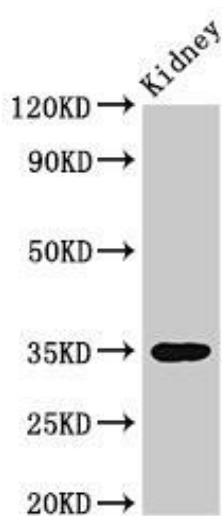
Immunogen:

Recombinant Human Protein YIF1B protein (1-153AA).

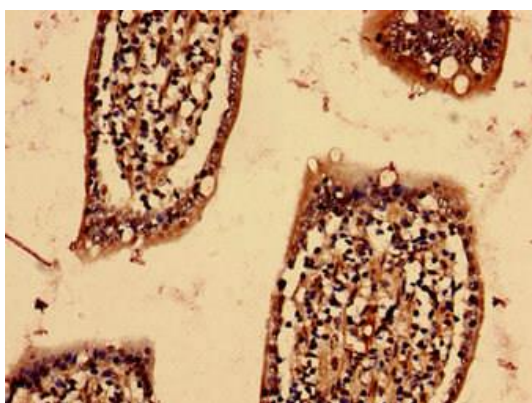
Storage:

Preservative: 0.03% Proclin 300. Constituents: 50% Glycerol, 0.01M PBS, PH 7.4

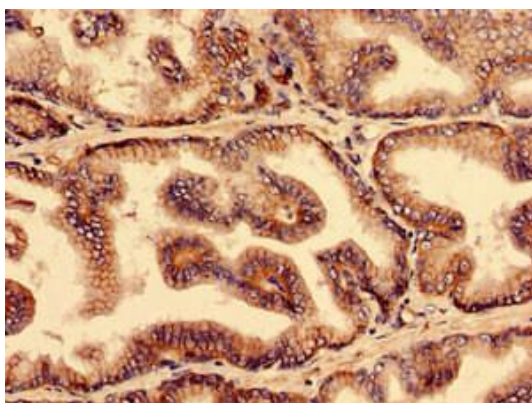
Product Images



Western Blot. Positive WB detected in: Rat kidney tissue. All lanes: YIF1B antibody at 3 μ g/ml. Secondary. Goat polyclonal to rabbit IgG at 1/50000 dilution. Predicted band size: 35, 32, 34, 33 kDa. Observed band size: 35 kDa.



Immunohistochemistry analysis of human small intestine tissue using PACO36170 at dilution of 1:100.



Immunohistochemistry analysis of human prostate tissue using PACO36170 at dilution of 1:100.