

NAALADL2 Antibody



PACO36230

Product Information

Size:

50ug

Reactivity:

Human, Mouse

Source:

Rabbit

Isotype:

IgG

Applications:

ELISA, WB, IHC, IF

Recommended dilutions:

ELISA:1:2000-1:10000, WB:1:2000-1:5000,
IHC:1:20-1:200, IF:1:50-1:200

Protein Background:

May be catalytically inactive.

Gene ID:

NAALADL2

Uniprot

Q58DX5

Synonyms:

Inactive N-acetylated-alpha-linked acid, c dipeptidase-like protein 2 (NAALADase L2),
NAALADL2

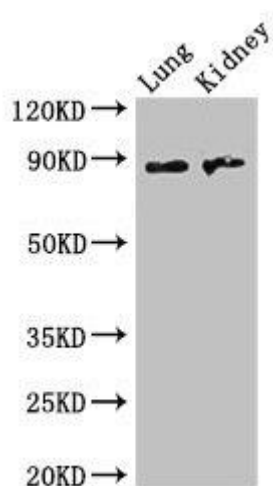
Immunogen:

Recombinant Human Inactive N-acetylated-alpha-linked acid, c dipeptidase-like protein
2 protein (143-795AA).

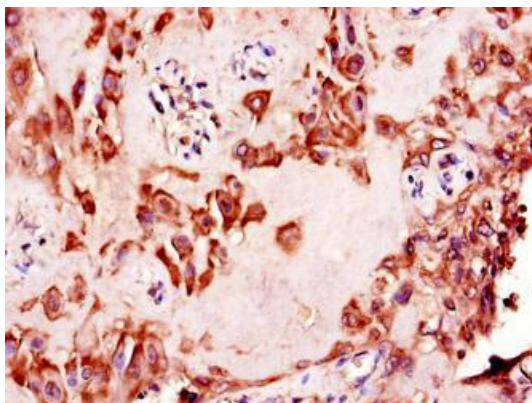
Storage:

Preservative: 0.03% Proclin 300. Constituents: 50% Glycerol, 0.01M PBS, PH 7.4

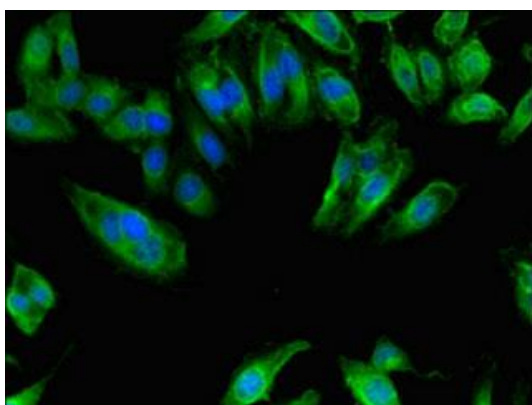
Product Images



Western Blot. Positive WB detected in: Mouse lung tissue, Mouse kidney tissue. All lanes: NAALADL2 antibody at 3.5 μ g/ml. Secondary. Goat polyclonal to rabbit IgG at 1/50000 dilution. Predicted band size: 89, 37 kDa. Observed band size: 89 kDa.



Immunohistochemistry of paraffin-embedded human placenta tissue using PACO36230 at dilution of 1:100.



Immunofluorescent analysis of HeLa cells using PACO36230 at dilution of 1:100 and Alexa Fluor 488-conjugated AffiniPure Goat Anti-Rabbit IgG(H+L).