

PACO36242

---

## Product Information

**Size:**

50ug

**Reactivity:**

Human

**Source:**

Rabbit

**Isotype:**

IgG

**Applications:**

ELISA, IHC, IF

**Recommended dilutions:**

ELISA:1:2000-1:10000, IHC:1:20-1:200,  
IF:1:50-1:200

**Protein Background:**

Endoribonuclease; cleaves preferentially 3' to purine-pyrimidine dinucleotide motifs in single-stranded RNA. The cleavage product contains a free 3' -OH group. Has no activity with double-stranded RNA or DNA. Required for normal mitochondrial function and cell viability.

**Gene ID:**

LACTB2

**Uniprot**

Q53H82

**Synonyms:**

Endoribonuclease LACTB2 (EC 3.1.27. -) (Beta-lactamase-like protein 2), LACTB2

**Immunogen:**

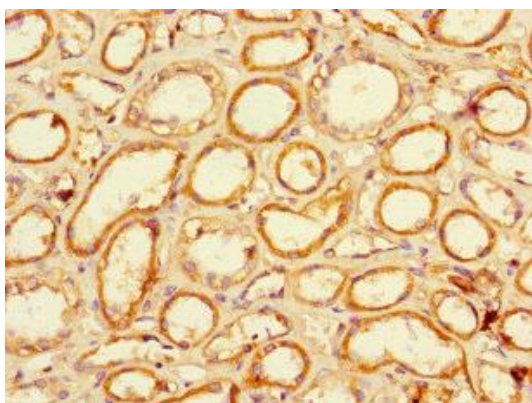
Recombinant Human Endoribonuclease LACTB2 protein (6-288AA).

**Storage:**

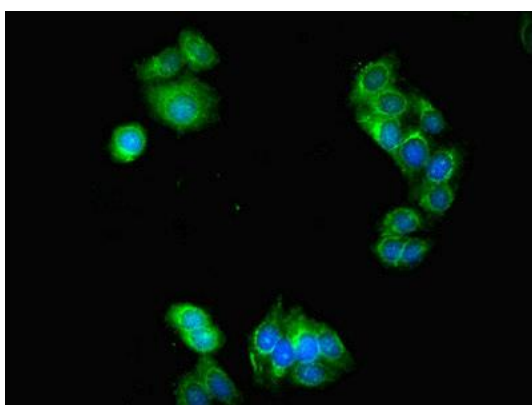
Preservative: 0.03% Proclin 300. Constituents: 50% Glycerol, 0.01M PBS, PH 7.4

## Product Images

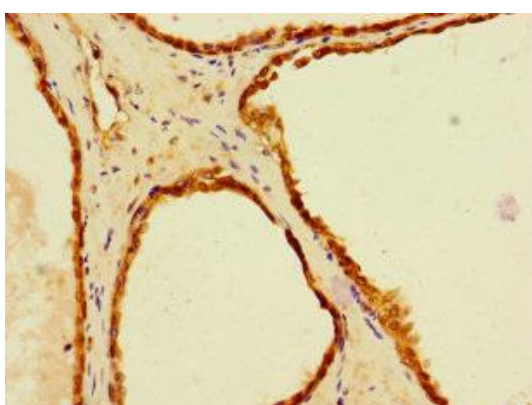
---



Immunohistochemistry of paraffin-embedded human kidney tissue using PACO36242 at dilution of 1:100.



Immunofluorescent analysis of HepG2 cells using PACO36242 at dilution of 1:100 and Alexa Fluor 488-conjugated AffiniPure Goat Anti-Rabbit IgG(H+L).



Immunohistochemistry of paraffin-embedded human prostate cancer using PACO36242 at dilution of 1:100.