

# SPIN3 Antibody



PACO36278

---

## Product Information

**Size:**

50ug

**Reactivity:**

Human

**Source:**

Rabbit

**Isotype:**

IgG

**Applications:**

ELISA, WB

**Recommended dilutions:**

ELISA:1:2000-1:10000, WB:1:1000-1:5000

**Protein Background:**

Exhibits H3K4me3-binding activity.

**Gene ID:**

SPIN3

**Uniprot**

Q5JUX0

**Synonyms:**

Spindlin-3 (Spindlin-like protein 3) (SPIN-3), SPIN3

**Immunogen:**

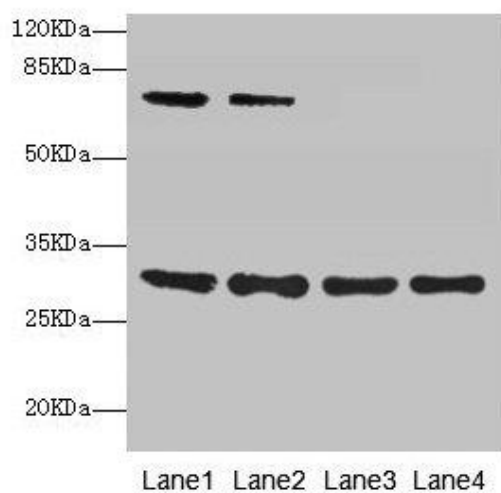
Recombinant Human Spindlin-3 protein (1-77AA).

**Storage:**

Preservative: 0.03% Proclin 300. Constituents: 50% Glycerol, 0.01M PBS, PH 7.4

## Product Images

---



Western blot. All lanes: SPIN3 antibody at 6 $\mu$ g/ml. Lane 1: A549 whole cell lysate. Lane 2: Hela whole cell lysate. Lane 3: A431 whole cell lysate. Lane 4: HepG2 whole cell lysate. Secondary. Goat polyclonal to rabbit IgG at 1/10000 dilution. Predicted band size: 30, 9 kDa. Observed band size: 30, 70 kDa.