

# KRT40 Antibody



PACO36386

---

## Product Information

**Size:**

50ug

**Reactivity:**

Human

**Source:**

Rabbit

**Isotype:**

IgG

**Applications:**

ELISA, IHC

**Recommended dilutions:**

ELISA:1:2000-1:10000, IHC:1:20-1:200

**Protein Background:**

May play a role in late hair differentiation.

**Gene ID:**

KRT40

**Uniprot**

Q6A162

**Synonyms:**

Keratin, type I cytoskeletal 40 (Cytokeratin-40) (CK-40) (Keratin-40) (K40) (Type I hair keratin Ka36), KRT40, KA36

**Immunogen:**

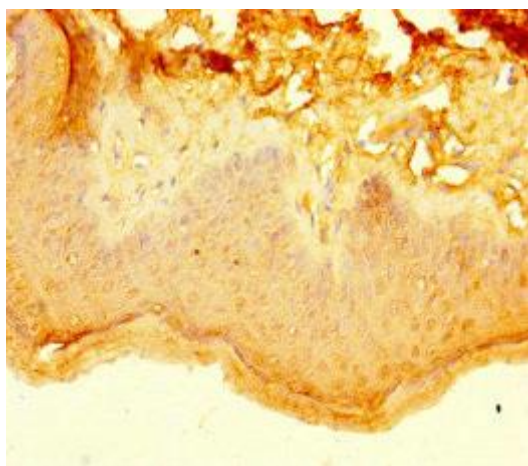
Recombinant Human Keratin, type I cytoskeletal 40 protein (1-200AA).

**Storage:**

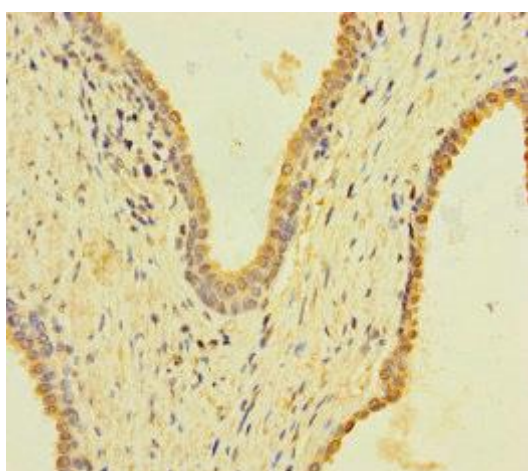
Preservative: 0.03% Proclin 300. Constituents: 50% Glycerol, 0.01M PBS, PH 7.4

## Product Images

---



Immunohistochemistry of paraffin-embedded human skin tissue using PACO36386 at dilution of 1:100.



Immunohistochemistry of paraffin-embedded human prostate cancer using PACO36386 at dilution of 1:100.