

PACO36466

Product Information

Size:

50ug

Reactivity:

Human, Mouse

Source:

Rabbit

Isotype:

IgG

Applications:

ELISA, WB

Recommended dilutions:

ELISA:1:2000-1:10000, WB:1:1000-1:5000

Protein Background:

Involved in both the retinal photoreceptor ribbon synapse formation and physiological functions of visual perception. Necessary for proper bipolar dendritic tip apposition to the photoreceptor ribbon synapse. Promotes matrix assembly and cell adhesiveness.

Gene ID:

EGFLAM

Uniprot

Q63HQ2

Synonyms:

Pikachurin (Agrin-like protein) (EGF-like, fibronectin type-III and laminin G-like domain-containing protein), EGFLAM, AGRINL AGRNL PIKA

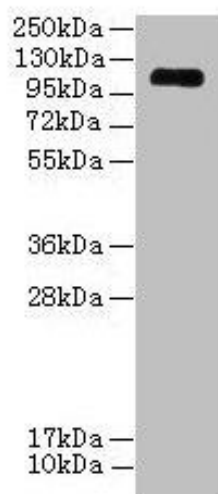
Immunogen:

Recombinant Human Pikachurin protein (25-300AA).

Storage:

Preservative: 0.03% Proclin 300. Constituents: 50% Glycerol, 0.01M PBS, PH 7.4

Product Images



Western blot. All lanes: EGFLAM antibody at 3 μ g/ml + Mouse heart tissue. Secondary. Goat polyclonal to rabbit IgG at 1/10000 dilution. Predicted band size: 112, 111, 42, 85, 17 kDa. Observed band size: 112 kDa.