

PACO36478

Product Information

Size:

50ug

Reactivity:

Human

Source:

Rabbit

Isotype:

IgG

Applications:

ELISA, IHC, IF

Recommended dilutions:

ELISA:1:2000-1:10000, IHC:1:20-1:200,
IF:1:50-1:200

Protein Background:

Retroviral envelope proteins mediate receptor recognition and membrane fusion during early infection. Endogenous envelope proteins may have kept, lost or modified their original function during evolution. This endogenous envelope protein has lost its original fusogenic properties.

Gene ID:

ERVK-6

Uniprot

Q69384

Synonyms:

Endogenous retrovirus group K member 6 Env polyprotein (EnvK2 protein) (Envelope polyprotein) (HERV-K(C7) envelope protein) (HERV-K(HML-2. HOM) envelope protein) (HERV-K108 envelope protein) (HERV-K_7p22.1 provirus ancestral Env polyprotein) [Cleaved into: Surface protein (SU); Transmembrane protein (TM)], ERVK-6, ERVK6

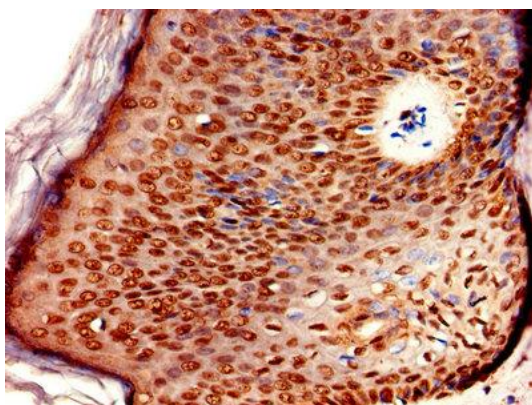
Immunogen:

Recombinant Human Endogenous retrovirus group K member 6 Env polyprotein protein (90-632AA).

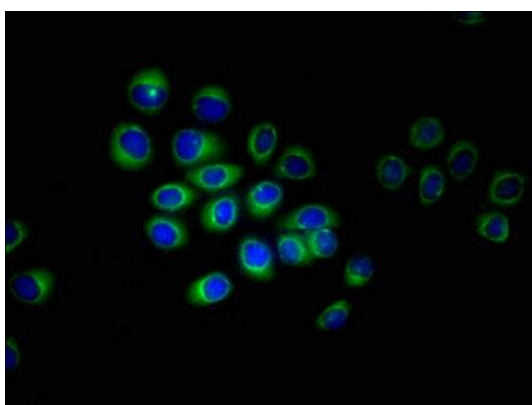
Storage:

Preservative: 0.03% Proclin 300. Constituents: 50% Glycerol, 0.01M PBS, PH 7.4

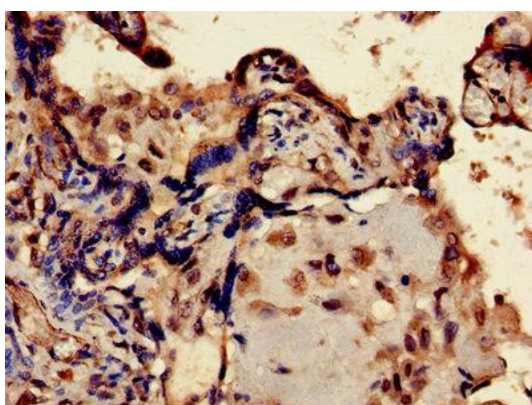
Product Images



Immunohistochemistry of paraffin-embedded human skin tissue using PACO36478 at dilution of 1:100.



Immunofluorescent analysis of A549 cells using PACO36478 at dilution of 1:100 and Alexa Fluor 488-conjugated AffiniPure Goat Anti-Rabbit IgG(H+L).



Immunohistochemistry of paraffin-embedded human placenta tissue using PACO36478 at dilution of 1:100.