

CCDC181 Antibody



PACO36494

Product Information

Size:

50ug

Reactivity:

Human

Source:

Rabbit

Isotype:

IgG

Applications:

ELISA, IHC

Recommended dilutions:

ELISA:1:2000-1:10000, IHC:1:20-1:200

Protein Background:

Microtubule-binding protein that localizes to the microtubular manchette of elongating spermatids.

Gene ID:

CCDC181

Uniprot

Q5TID7

Synonyms:

Coiled-coil domain-containing protein 181, CCDC181, C1orf114

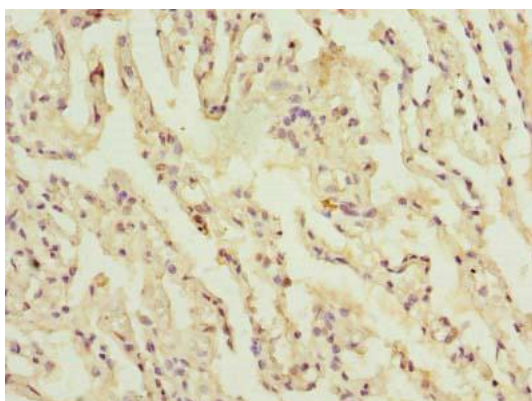
Immunogen:

Recombinant Human Coiled-coil domain-containing protein 181 protein (91-280AA).

Storage:

Preservative: 0.03% Proclin 300. Constituents: 50% Glycerol, 0.01M PBS, PH 7.4

Product Images



Immunohistochemistry of paraffin-embedded human lung tissue using PACO36494 at dilution of 1:100.