

PACO36538

---

## Product Information

**Size:**

50ug

**Reactivity:**

Human

**Source:**

Rabbit

**Isotype:**

IgG

**Applications:**

ELISA, IHC

**Recommended dilutions:**

ELISA:1:2000-1:10000, IHC:1:20-1:200

**Protein Background:**

Cell surface receptor that may play a role in the innate and adaptive immune response. Acts as a counter-receptor for CD276 and interaction with CD276 on T-cells enhances T-cell activation.

**Gene ID:**

TREML2

**Uniprot**

Q5T2D2

**Synonyms:**

Trem-like transcript 2 protein (TLT-2) (Triggering receptor expressed on myeloid cells-like protein 2), TREML2, C6orf76 TLT2

**Immunogen:**

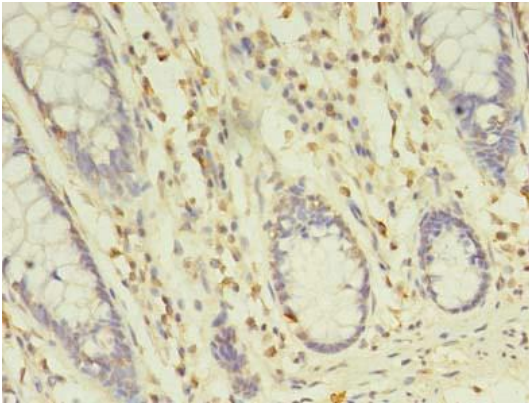
Recombinant Human Trem-like transcript 2 protein (19-268AA).

**Storage:**

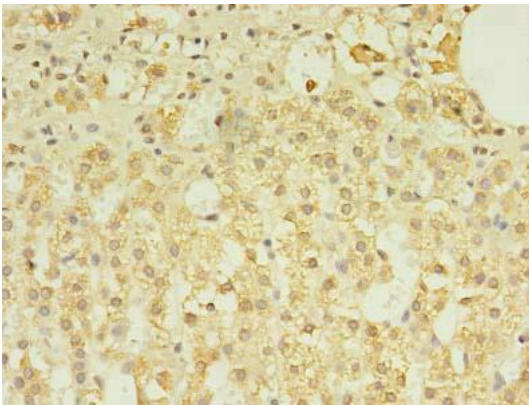
Preservative: 0.03% Proclin 300. Constituents: 50% Glycerol, 0.01M PBS, PH 7.4

## Product Images

---



Immunohistochemistry of paraffin-embedded human colon cancer using PACO36538 at dilution of 1:100.



Immunohistochemistry of paraffin-embedded human adrenal gland tissue using PACO36538 at dilution of 1:100.