

PACO36598

Product Information

Size:

50ug

Reactivity:

Human

Source:

Rabbit

Isotype:

IgG

Applications:

ELISA, WB, IHC

Recommended dilutions:

ELISA:1:2000-1:10000, WB:1:1000-1:5000,
IHC:1:20-1:200

Protein Background:

Aspartic protease that mediates the cleavage of NFE2L1/NRF1 at 'Leu-104', thereby promoting release of NFE2L1/NRF1 from the endoplasmic reticulum membrane. Ubiquitination of NFE2L1/NRF1 is a prerequisite for cleavage, suggesting that DDI2 specifically recognizes and binds ubiquitinated NFE2L1/NRF1.

Gene ID:

DDI2

Uniprot

Q5TDH0

Synonyms:

Protein DDI1 homolog 2 (EC 3.4.23. -), DDI2

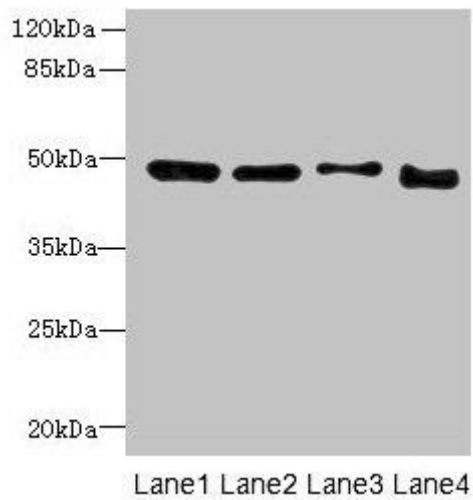
Immunogen:

Recombinant Human Protein DDI1 homolog 2 protein (1-211AA).

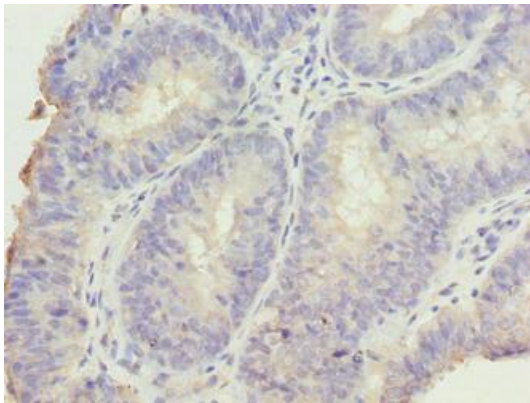
Storage:

Preservative: 0.03% Proclin 300. Constituents: 50% Glycerol, 0.01M PBS, PH 7.4

Product Images



Western blot. All lanes: DDI2 antibody at 4 μ g/ml. Lane 1: A431 whole cell lysate. Lane 2: HL60 whole cell lysate. Lane 3: K562 whole cell lysate. Lane 4: Caco-2 whole cell lysate. Secondary. Goat polyclonal to rabbit IgG at 1/10000 dilution. Predicted band size: 45, 24, 47 kDa. Observed band size: 47 kDa.



Immunohistochemistry of paraffin-embedded human endometrial cancer using PACO36598 at dilution of 1:100.