

AGBL2 Antibody



PACO36602

Product Information

Size:

50ug

Reactivity:

Human, Mouse

Source:

Rabbit

Isotype:

IgG

Applications:

ELISA, WB, IHC

Recommended dilutions:

ELISA:1:2000-1:10000, WB:1:500-1:2000,
IHC:1:20-1:200

Protein Background:

Metallocarboxypeptidase that mediates deglutamylation of target proteins. Catalyzes the deglutamylation of polyglutamate side chains generated by post-translational polyglutamylation in proteins such as tubulins. Also removes gene-encoded polyglutamates from the carboxy-terminus of target proteins such as MYLK. Does not show detyrosinase or deglycylase activities from the carboxy-terminus of tubulin.

Gene ID:

AGBL2

Uniprot

Q5U5Z8

Synonyms:

Cytosolic carboxypeptidase 2 (EC 3.4.17. -) (ATP/GTP-binding protein-like 2), AGBL2, CCP2

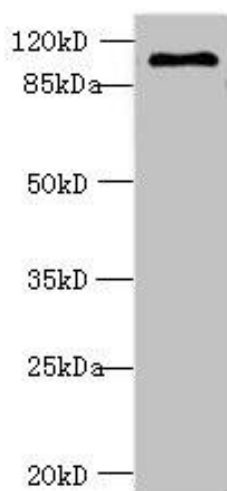
Immunogen:

Recombinant Human Cytosolic carboxypeptidase 2 protein (10-270AA).

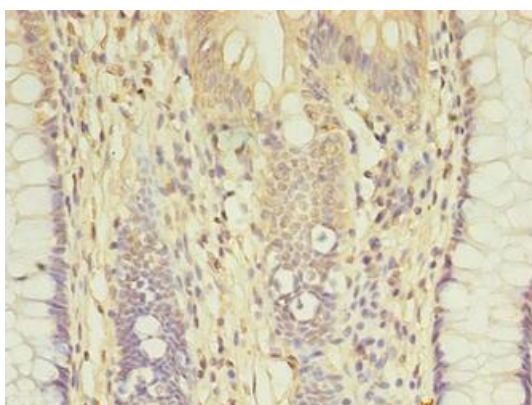
Storage:

Preservative: 0.03% Proclin 300. Constituents: 50% Glycerol, 0.01M PBS, PH 7.4

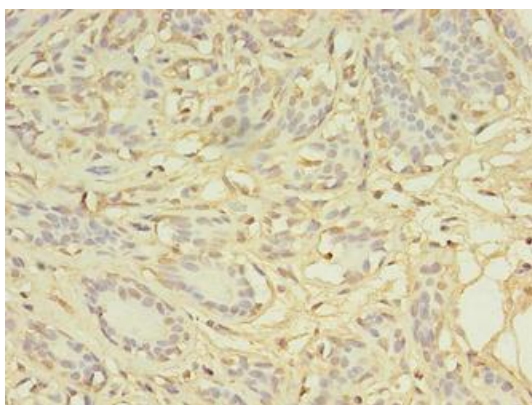
Product Images



Western blot. All lanes: AGL2 antibody at 8 μ g/ml + Mouse brain tissue. Secondary. Goat polyclonal to rabbit IgG at 1/10000 dilution. Predicted band size: 105, 50, 33 kDa. Observed band size: 105 kDa.



Immunohistochemistry of paraffin-embedded human colon cancer using PACO36602 at dilution of 1:100.



Immunohistochemistry of paraffin-embedded human breast cancer using PACO36602 at dilution of 1:100.