

SUSD4 Antibody



PACO36606

Product Information

Size:

50ug

Reactivity:

Human

Source:

Rabbit

Isotype:

IgG

Applications:

ELISA, IHC

Recommended dilutions:

ELISA:1:2000-1:10000, IHC:1:20-1:200

Protein Background:

Acts as complement inhibitor by disrupting the formation of the classical C3 convertase. Isoform 3 inhibits the classical complement pathway, while membrane-bound isoform 1 inhibits deposition of C3b via both the classical and alternative complement pathways.

Gene ID:

SUSD4

Uniprot

Q5VX71

Synonyms:

Sushi domain-containing protein 4, SUSD4

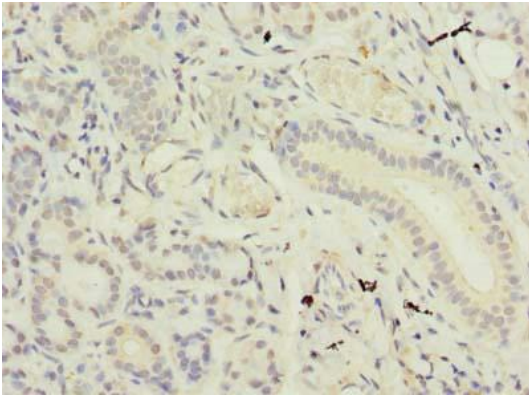
Immunogen:

Recombinant Human Sushi domain-containing protein 4 protein (56-290AA).

Storage:

Preservative: 0.03% Proclin 300. Constituents: 50% Glycerol, 0.01M PBS, PH 7.4

Product Images



Immunohistochemistry of paraffin-embedded human pancreatic tissue using PACO36606 at dilution of 1:100.