

PACO36634

Product Information

Size:

50ug

Reactivity:

Human

Source:

Rabbit

Isotype:

IgG

Applications:

ELISA, WB, IHC, IF

Recommended dilutions:

ELISA:1:2000-1:10000, WB:1:500-1:5000,
IHC:1:200-1:500, IF:1:50-1:200

Protein Background:

Probable protein tyrosine phosphatase. Has a phosphatase activity-independent regulatory role in MAP3K5/ASK1-mediated apoptosis, preventing MAP3K5/ASK1 inhibition by AKT1. Shows no phosphatase activity on MAPK1/ERK2, MAPK8/JNK, MAPK14/p38 and MAP3K5/ASK1.

Gene ID:

DUSP13

Uniprot

Q6B8I1

Synonyms:

Dual specificity protein phosphatase 13 isoform A (DUSP13A) (EC 3.1.3.16) (EC 3.1.3.48) (Branching-enzyme interacting DSP) (Muscle-restricted DSP) (MDSP), DUSP13, BEDP DUSP13A MDSP

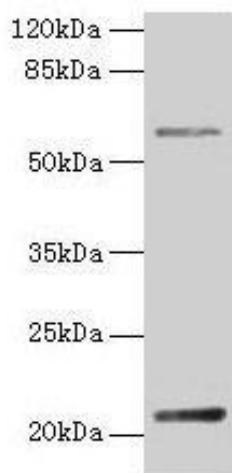
Immunogen:

Recombinant Human Dual specificity protein phosphatase 13 isoform A protein (1-198AA).

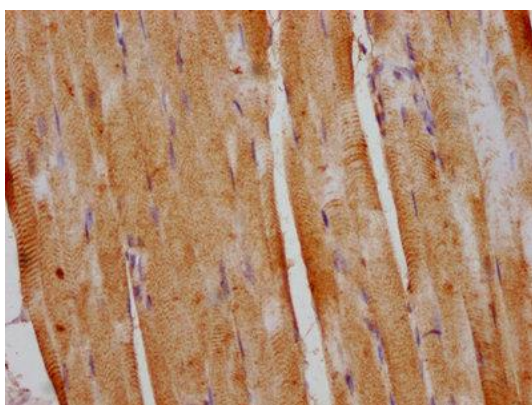
Storage:

Preservative: 0.03% Proclin 300. Constituents: 50% Glycerol, 0.01M PBS, PH 7.4

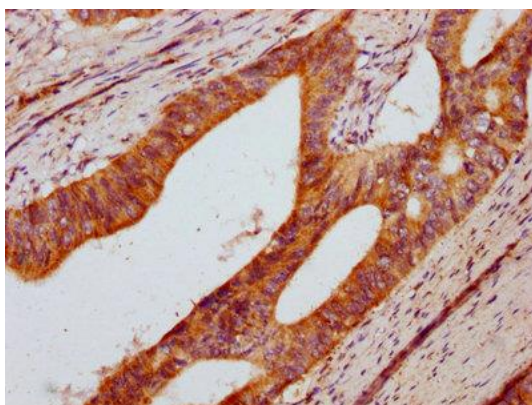
Product Images



Western blot. All lanes: DUSP13 antibody at 4 μ g/ml + HeLa whole cell lysate. Secondary. Goat polyclonal to rabbit IgG at 1/10000 dilution. Predicted band size: 21, 23, 7, 28, 8, 10, 18 kDa. Observed band size: 21 kDa.



IHC image of PACO36634 diluted at 1:400 and staining in paraffin-embedded human skeletal muscle tissue performed on a Leica BondTM system. After dewaxing and hydration, antigen retrieval was mediated by high pressure in a citrate buffer (pH 6.0). Section was blocked with 10% normal goat serum 30min at RT. Then primary antibody (1% BSA) was incubated at 4 $^{\circ}$ C overnight. The primary is detected by a biotinylated secondary antibody and visualized using an HRP conjugated SP system.



IHC image of PACO36634 diluted at 1:400 and staining in paraffin-embedded human colon cancer performed on a Leica BondTM system. After dewaxing and hydration, antigen retrieval was mediated by high pressure in a citrate buffer (pH 6.0). Section was blocked with 10% normal goat serum 30min at RT. Then primary antibody (1% BSA) was incubated at 4 $^{\circ}$ C overnight. The primary is detected by a biotinylated secondary antibody and visualized using an HRP conjugated SP system.