

ARHGAP27 Antibody



PACO36718

Product Information

Size:

50ug

Reactivity:

Human

Source:

Rabbit

Isotype:

IgG

Applications:

ELISA, IHC

Recommended dilutions:

ELISA:1:2000-1:10000, IHC:1:20-1:200

Protein Background:

Rho GTPase-activating protein which may be involved in clathrin-mediated endocytosis. GTPase activators for the Rho-type GTPases act by converting them to an inactive GDP-bound state. Has activity toward CDC42 and RAC1.

Gene ID:

ARHGAP27

Uniprot

Q6ZUM4

Synonyms:

Rho GTPase-activating protein 27 (CIN85-associated multi-domain-containing Rho GTPase-activating protein 1) (Rho-type GTPase-activating protein 27) (SH3 domain-containing protein 20), ARHGAP27, CAMGAP1 SH3D20

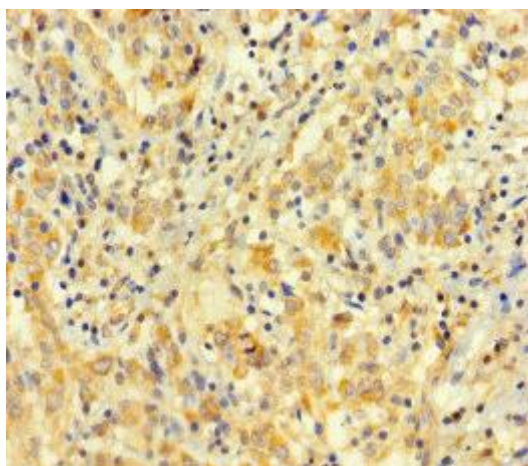
Immunogen:

Recombinant Human Rho GTPase-activating protein 27 protein (1-300AA).

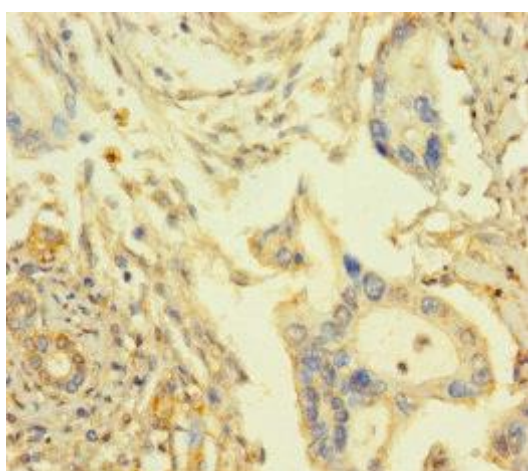
Storage:

Preservative: 0.03% Proclin 300. Constituents: 50% Glycerol, 0.01M PBS, PH 7.4

Product Images



Immunohistochemistry of paraffin-embedded human lung cancer using PACO36718 at dilution of 1:100.



Immunohistochemistry of paraffin-embedded human pancreatic cancer using PACO36718 at dilution of 1:100.