

## Product Information

**Size:**

50ug

**Reactivity:**

Human

**Source:**

Rabbit

**Isotype:**

IgG

**Applications:**

ELISA, WB

**Recommended dilutions:**

ELISA:1:2000-1:10000, WB:1:500-1:2000

**Protein Background:**

cytoplasm, mitochondrion, glycerol kinase activity, glycerol metabolic process, glycerol-3-phosphate biosynthetic process, phosphorylation, triglyceride metabolic process.

**Gene ID:**

GK5

**Uniprot**

Q6ZS86

**Synonyms:**

Putative glycerol kinase 5 (GK 5) (Glycerokinase 5) (EC 2.7.1.30) (ATP: glycerol 3-phosphotransferase 5), GK5

**Immunogen:**

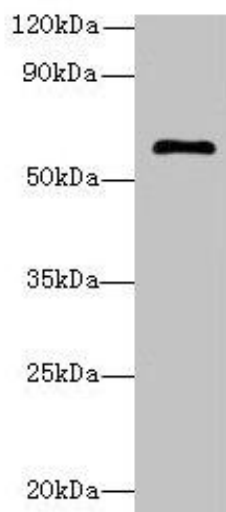
Recombinant Human Putative glycerol kinase 5 protein (96-301AA).

**Storage:**

Preservative: 0.03% Proclin 300. Constituents: 50% Glycerol, 0.01M PBS, PH 7.4

## Product Images

---



Western blot. All lanes: GK5 antibody at 4 $\mu$ g/ml + K562 whole cell lysate. Secondary. Goat polyclonal to rabbit IgG at 1/10000 dilution. Predicted band size: 60, 34, 28 kDa. Observed band size: 60 kDa.