

# MFSD5 Antibody



PACO36822

---

## Product Information

**Size:**

50ug

**Reactivity:**

Human

**Source:**

Rabbit

**Isotype:**

IgG

**Applications:**

ELISA, IHC, IF

**Recommended dilutions:**

ELISA:1:2000-1:10000, IHC:1:20-1:200,  
IF:1:50-1:200

**Protein Background:**

Mediates high-affinity intracellular uptake of the rare oligo-element molybdenum.

**Gene ID:**

MFSD5

**Uniprot**

Q6N075

**Synonyms:**

Molybdate-anion transporter (Major facilitator superfamily domain-containing protein 5) (Molybdate transporter 2 homolog) (hsMOT2), MFSD5

**Immunogen:**

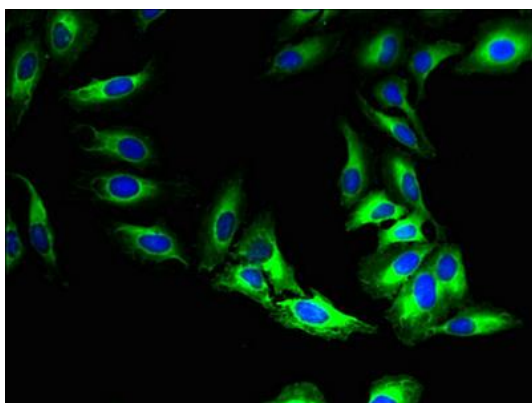
Recombinant Human Molybdate-anion transporter protein (216-248AA).

**Storage:**

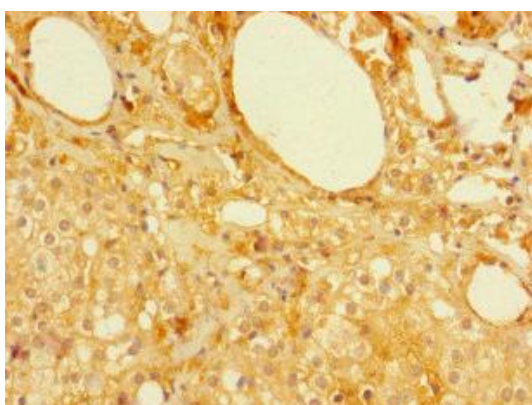
Preservative: 0.03% Proclin 300. Constituents: 50% Glycerol, 0.01M PBS, PH 7.4

## Product Images

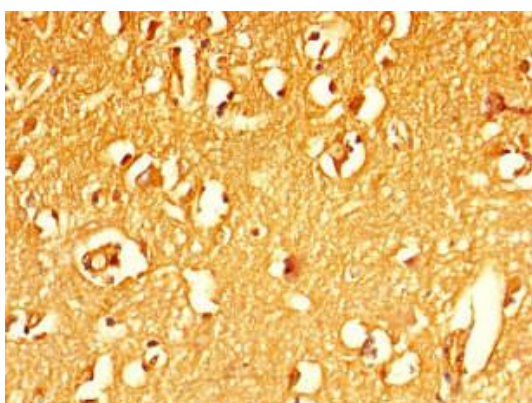
---



Immunofluorescent analysis of HeLa cells using PACO36822 at dilution of 1:100 and Alexa Fluor 488-conjugated AffiniPure Goat Anti-Rabbit IgG(H+L).



Immunohistochemistry of paraffin-embedded human prostate cancer using PACO36822 at dilution of 1:100.



Immunohistochemistry of paraffin-embedded human brain tissue using PACO36822 at dilution of 1:100.