

XRRA1 Antibody



PACO36834

Product Information

Size:

50ug

Reactivity:

Human, Mouse

Source:

Rabbit

Isotype:

IgG

Applications:

ELISA, WB, IHC

Recommended dilutions:

ELISA:1:2000-1:10000, WB:1:1000-1:5000,
IHC:1:20-1:200

Protein Background:

May be involved in the response of cells to X-ray radiation.

Gene ID:

XRRA1

Uniprot

Q6P2D8

Synonyms:

X-ray radiation resistance-associated protein 1, XRRA1

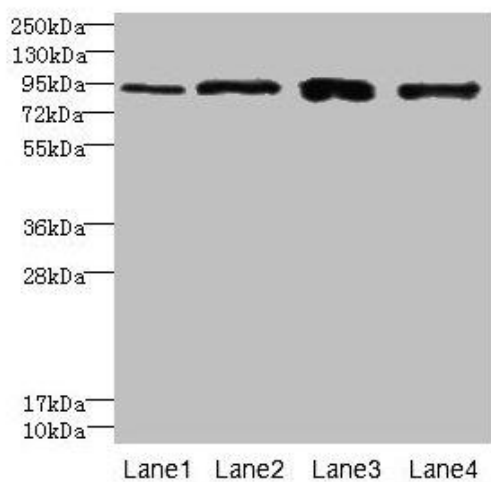
Immunogen:

Recombinant Human X-ray radiation resistance-associated protein 1 protein (101-400AA).

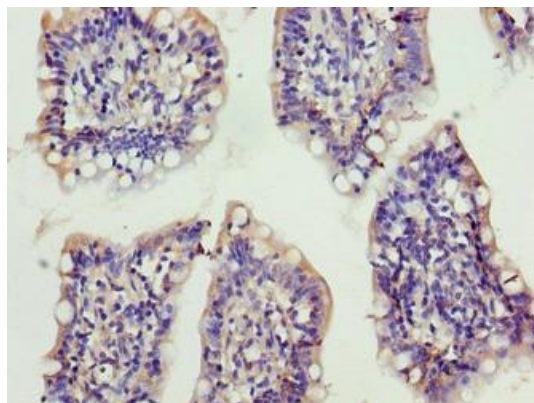
Storage:

Preservative: 0.03% Proclin 300. Constituents: 50% Glycerol, 0.01M PBS, PH 7.4

Product Images



Western blot. All lanes: XRR1 antibody at 6 μ g/ml. Lane 1: HepG2 whole cell lysate. Lane 2: Mouse kidney tissue. Lane 3: HL60 whole cell lysate. Lane 4: U251 whole cell lysate. Secondary: Goat polyclonal to rabbit IgG at 1/10000 dilution. Predicted band size: 90, 68, 89, 84, 59 kDa. Observed band size: 90 kDa.



Immunohistochemistry of paraffin-embedded human small intestine tissue using PACO36834 at dilution of 1:100.