

PACO36906

---

## Product Information

**Size:**

50ug

**Reactivity:**

Human, Mouse

**Source:**

Rabbit

**Isotype:**

IgG

**Applications:**

ELISA, WB, IHC

**Recommended dilutions:**

ELISA:1:2000-1:10000, WB:1:500-1:5000,  
IHC:1:20-1:200

**Protein Background:**

Brainstem-restricted receptor for GDF15 which regulates food intake, energy expenditure and body weight in response to metabolic and toxin-induced stresses. Upon interaction with its ligand, GDF15, interacts with RET and induces cellular signaling through activation of MAPK- and AKT- signaling pathways.

**Gene ID:**

GFRAL

**Uniprot**

Q6UXV0

**Synonyms:**

GDNF family receptor alpha-like, GFRAL, C6orf144

**Immunogen:**

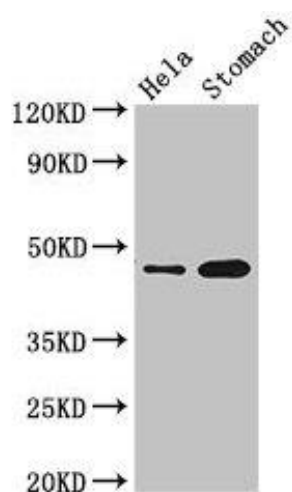
Recombinant Human GDNF family receptor alpha-like protein (19-351AA).

**Storage:**

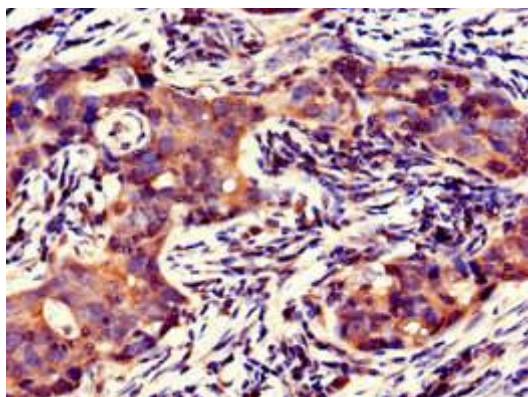
Preservative: 0.03% Proclin 300. Constituents: 50% Glycerol, 0.01M PBS, PH 7.4

## Product Images

---



Western Blot. Positive WB detected in: HeLa whole cell lysate, Mouse stomach tissue. All lanes: GFRAL antibody at 3.5 $\mu$ g/ml. Secondary. Goat polyclonal to rabbit IgG at 1/50000 dilution. Predicted band size: 45 kDa. Observed band size: 45 kDa.



Immunohistochemistry of paraffin-embedded human pancreatic cancer using PACO36906 at dilution of 1:100.