

Product Information

Size:

50ug

Reactivity:

Human

Source:

Rabbit

Isotype:

IgG

Applications:

ELISA, IHC

Recommended dilutions:

ELISA:1:2000-1:10000, IHC:1:20-1:200

Protein Background:

Plays an important role in the assembly of the mitochondrial large ribosomal subunit. Required for optimal function of the zinc-finger antiviral protein ZC3HAV1. Associates with mitochondrial DNA.

Gene ID:

DHX30

Uniprot

Q7L2E3

Synonyms:

Putative ATP-dependent RNA helicase DHX30 (EC 3.6.4.13) (DEAH box protein 30), DHX30, DDX30 KIAA0890

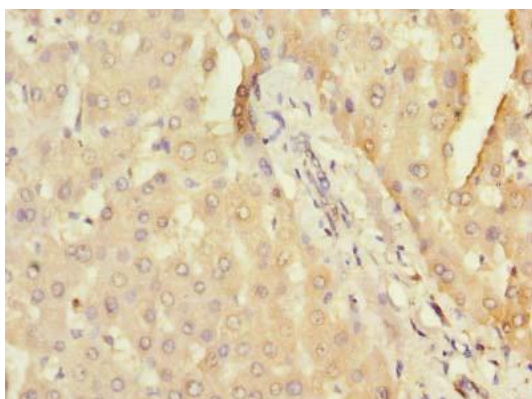
Immunogen:

Recombinant Human Putative ATP-dependent RNA helicase DHX30 protein (694-1000AA).

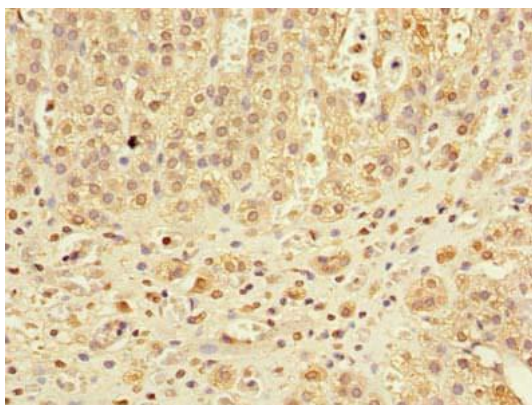
Storage:

Preservative: 0.03% Proclin 300. Constituents: 50% Glycerol, 0.01M PBS, PH 7.4

Product Images



Immunohistochemistry of paraffin-embedded human liver tissue using PACO36922 at dilution of 1:100.



Immunohistochemistry of paraffin-embedded human adrenal gland tissue using PACO36922 at dilution of 1:100.